

PATHPORT DIN-MOUNT DMX/RDM ETHERNET GATEWAY



Models shown: 1. PWPP DIN P1
2. PWPP DIN P2
3. PWPP DIN P4

WARRANTY

3-year limited warranty. Complete warranty terms located at: <https://www.acuitybrands.com/support/warranty>

NOTE

Actual performance may differ as a result of end-user environment and application. Specifications subject to change without notice.



Pathport DIN-mount models support SixEye cloud-based remote management

ORDERING INFORMATION

| PWPP | | EXAMPLE: PWPP DIN P4 | |
|--|---------------|----------------------|--------------------|
| Series | Form Factor | Port Quantity | |
| PWPP Pathway Pathport DMX/RDM Ethernet Gateway | DIN DIN-mount | P1 | 1 DMX Port (4.5") |
| | | P2 | 2 DMX Ports (4.5") |
| | | P4 | 4 DMX Ports (8.0") |

| Accessories | |
|----------------------------------|--|
| PWPWR DIN TERM 100W 48VDC | Power Supply, DIN-mount, Compression Fit Terminal, 100 Watts, 48 Volts DC |
| PWENC SHELF HOR | DIN System Enclosure, 2-RU Shelf unit with 2x16.5", Horizontal Rails |
| PWENC SML VER | DIN System Enclosure, Small 10" x 13" x 4.5", Vertical Rails |
| PWENC MED VER | DIN System Enclosure, Medium 10" x 23" x 4.5", Vertical Rails |
| PWENC SML HOR | DIN System Enclosure, Small 10" x 13" x 4.5", Horizontal Rails |
| PWENC MED HOR | DIN System Enclosure, Medium 10" x 23" x 4.5", Horizontal Rails |
| PWENC LRG VER | DIN System Enclosure, Large 18.5" x 31.5" x 6.25", Vertical Rails |
| PWCON SPARE IDC5 Q4 | Connector, Spare, 5-Pin Insulation Displacement Contact Connector, (Qty 4) |
| PWCON SPARE CSC5 Q4 | Connector, Spare, 5-Pin Compression Screw Connector, (Qty 4) |

OVERVIEW

The Pathport® series of DMX/RDM Ethernet Gateways are the heart of DMX distribution.

Connect DMX512 control devices and send data over an Ethernet network to DMX512-capable end devices such as intelligent lighting fixtures, LEDs, Dimmers, and more. Each port can be configured as an Input or Output as needed.

The compact Pathport® DIN-mount Gateways are designed for permanent installation and available in a variety of port counts. They are configured using the free downloadable software, Pathscape.

Advanced features include extensive protocol support, slot-by-slot patching using multiple sources, cross-fading on priority change, and signal loss behavior. Different Ethernet protocols may be merged together and prioritized. Status LEDs provide instant confirmation of port activity.

FEATURES

- Convert DMX512 to Ethernet protocol for distribution
- Convert Ethernet protocol to DMX512 for end devices
- One, Two, or Four DMX512 ports, individually configurable
- LED Indicators for Port Direction, Power, Ethernet link activity, and Identify
- DMX output configured as whole universes or custom slot-by-slot patch
- Map up to eight control sources to each output slot, with merge and/or priority options for each source
- Acts as E1.20 RDM controller, when used with free Pathscape configuration software or ANSI E1.33 RDMnet compliant controllers
- User-configurable DMX output speed and signal loss behavior
- Supports the following Ethernet sending and receiving protocols:
 - Pathway ssACN (Secure sACN)
 - E1.31 streaming ACN (sACN)
 - Art-Net
 - Pathport Protocol
 - ShowNet
- Operates on Power-over-Ethernet (PoE) or auxiliary 24-48VDC input
- Mounts to standard 35mm DIN rail
- Contact closure input configurable per port to Pause RDM or DMX Force Hold (P4)
- microSD card slot allows backup or restore of device configuration (P4)
- Also available in Wall-mount (PWPP WM) and Portable (PWPP DT) form factors

SPECIFICATIONS

Electrical

| | |
|----------------------|---|
| Input Ratings | PWPP DIN P1, P2 |
| | PoE Class 1 device 18-48VDC auxiliary power input 4W maximum power consumption |
| | PWPP DIN P4 |
| | PoE Class 2 device 24-48VDC auxiliary power input 7W maximum power consumption Dry Contact Closure |

| | |
|---|--|
| Isolation & Fault Protection | PWPP DIN P1, P2 |
| | 60V fault protection on DMX ports |
| | PWPP DIN P4 |
| | 3000V isolation between DMX ports 60V fault protection on DMX ports |

| | |
|------------------------------|--------------------|
| Regulatory Compliance | PWPP DIN P4 |
| | CE |

Mechanical

| | | |
|-------------------|------------------------|---|
| Dimensions | PWPP DIN P1, P2 | 4.5" W x 4" H x 1.9" D (113mm W x 103mm H x 48mm D) |
| | PWPP DIN P4 | 8.0" W x 4" H x 1.9" D (203mm W x 103mm H x 48mm D) |

| | |
|---------------|-------------------|
| Weight | 0.4 lbs (0.18 kg) |
|---------------|-------------------|

Environmental

| | |
|------------------------------|-------------------------------|
| Operating Temperature | 14°F to 113°F (-10°C to 45°C) |
|------------------------------|-------------------------------|

| | |
|--------------------------|-----------------------|
| Relative Humidity | 5-95%, non-condensing |
|--------------------------|-----------------------|

| | |
|----------------------------|-------------------------------|
| Standard Compliance | PWPP DIN P4 |
| | RoHS 2011/65/EU + A1 2015/863 |

General

| | |
|-------------------|--|
| Compliance | ANSI E1.11 DMX512-A R2013 ANSI E1.20 RDM - Remote Device Management ANSI E1.31 sACN - Streaming ACN, Art-Net, Strand ShowNet, Pathway ssACN ANSI E1.33 RDMnet - RDM over IP IEEE 802.3af Power-over-Ethernet Class 2 Low Voltage California Title 1.81.26, Security of Connected Devices |
|-------------------|--|

PART NUMBER CROSS-REFERENCE

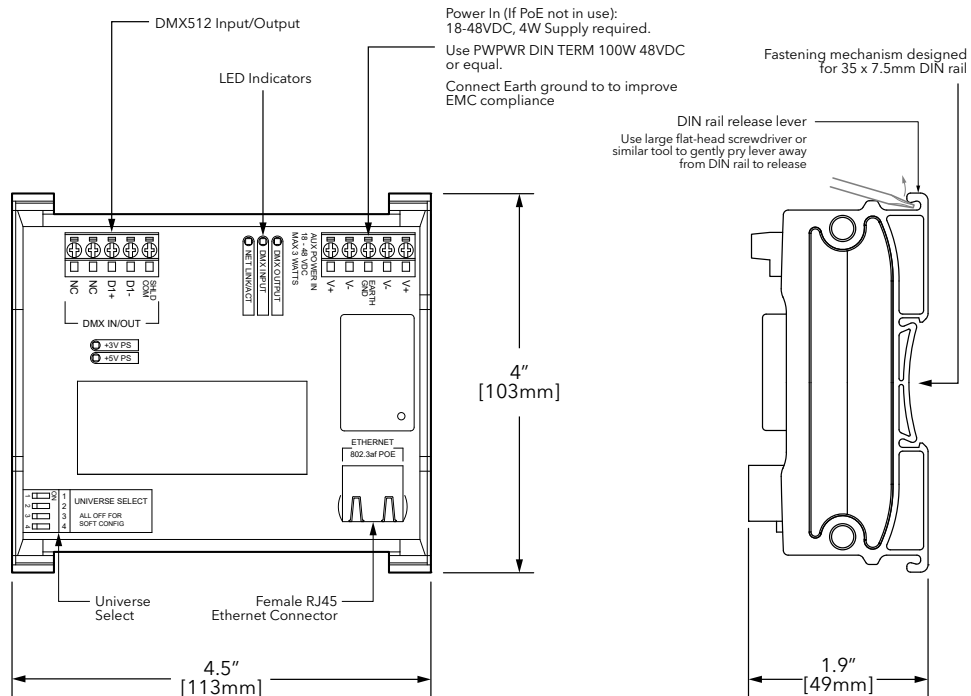
| PREVIOUS | NEW | |
|-------------|----------------|------------------------------------|
| Part Number | Catalog Number | Description |
| 6821 | PWPP DIN P1 | Pathport, DIN-mount, 1-Port (4.5") |
| 6822 | PWPP DIN P2 | Pathport, DIN-mount, 2-Ports (8") |
| 6824 | PWPP DIN P4 | Pathport, DIN-mount, 4-Ports (8") |

WIRING

| DMX512 / RDM PINOUT | | |
|---------------------------|----------------------------|---------------------------|
| Purpose | XLR / Terminal Block Pin # | RJ45 PIN # and Wire Color |
| Shield / Common | 1 | 7 - White / Brown |
| Data - (complement) | 2 | 2 - Orange |
| Data + (true) | 3 | 1 - White / Orange |
| Not Used | 4 | 6 - Green |
| Not Used | 5 | 3 - White / Green |
| Not Used - Do Not Connect | N/A | 4 - Blue |
| Not Used - Do Not Connect | N/A | 5 - White / Blue |
| Not Used - Do Not Connect | N/A | 8 - Brown |

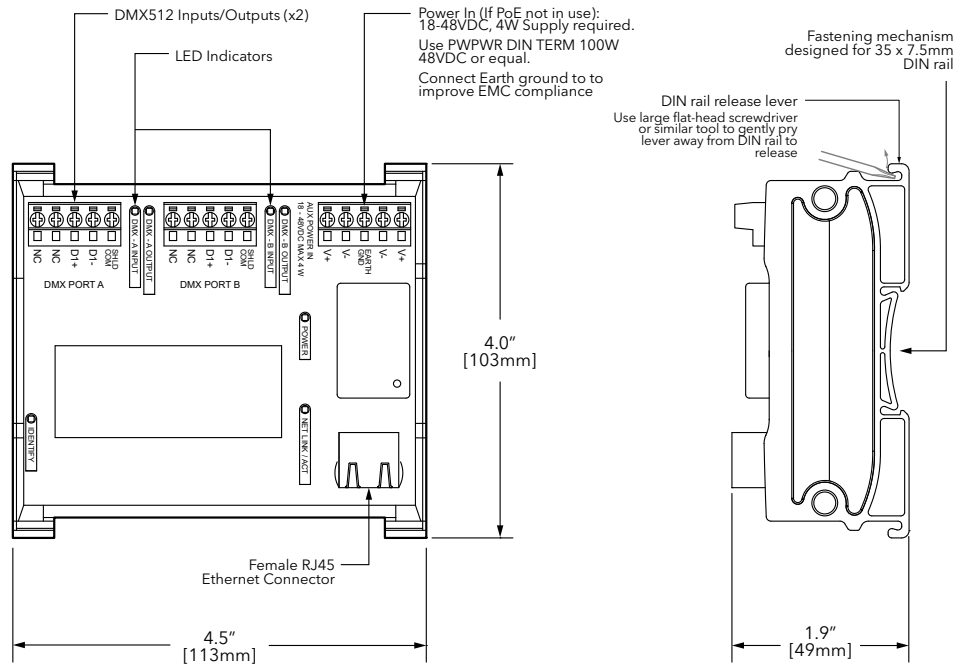
DIMENSIONS

PWPP DIN P1

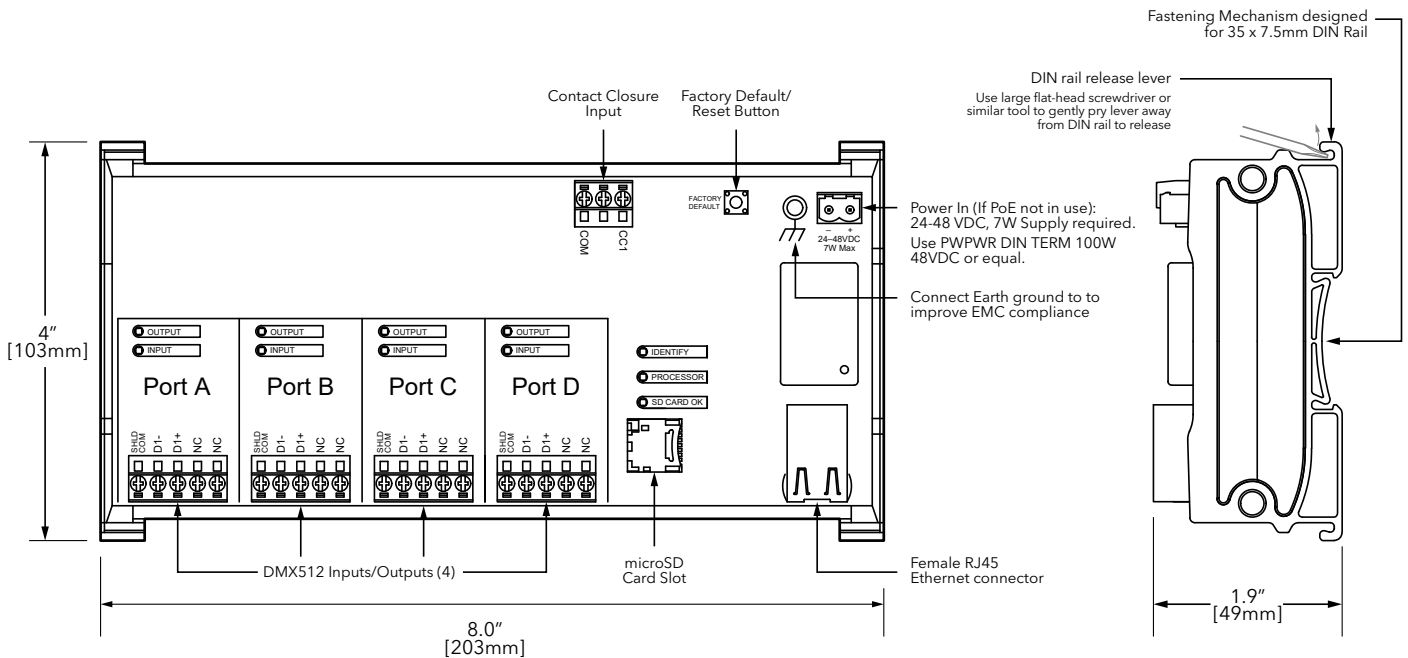


DIMENSIONS

PWPP DIN P2



PWPP DIN P4



APPLICATION RISER

