

Quick Project Quotes: email [quotes@xicato.com](mailto:quotes@xicato.com)

A complete portfolio of best-of-breed flexible linear solutions that enable uniform lighting designs with options that match the distinguished Xicato color point the market craves. Unlike other linear products, XFL offers a multitude of profiles, densities and color; meeting the most stringent requirements of architects, lighting designers and specifiers.

**Portfolio Features and Benefits**

- Unmatched performance for CRI, R9, Fidelity and Gamut
- Most commonly used 24V input for CV and PWM
- Superior construction for higher reliability and heat management, including 3 oz. Cu
- 10-year warranty
- Supported by Xicato Bluetooth® Mesh Control portfolio



**Spec Locks**

Spec Locks	Gold Plated PCB	CRI	R9	Gamut	Fidelity	Binning (SDCM)	Max Run	Luminous Efficacy
Static White	🔒	🔒	🔒	🔒	🔒	🔒	🔒	🔒
Ultra Slim	🔒	🔒	🔒	🔒	🔒	🔒	🔒	🔒
High Density		🔒	🔒	🔒	🔒	🔒	🔒	🔒
Tunable White	🔒	🔒					🔒	🔒
Dim to Warm	🔒	🔒					🔒	🔒
Full Spectrum	🔒	🔒	🔒	🔒	🔒	🔒	🔒	🔒
Side Emitting		🔒					🔒	🔒
RGBW		🔒					🔒	🔒

# White/Single Color Linear Lighting

## Static White LED Lighting

Small profile and energy efficient, easy to install on its own or in a channel.



Power Consumption	W/ft: 1.0, 3.0, 4.4, 5.0, 6.0 W/m: 3.28, 9.84, 14.43, 16.40, 19.68
Flux Output (lm/m, lm/ft)	220-1720 / 67-526
Color Temperature (K)	2200, 2500, 2700, 3000, 3500, 4100 Other CCTs available upon request
Profile (mm/inches)	10.0 / 0.39
Cut Points (mm/inches)	25.0 / 0.98
LEDs/m	240
Dimmable	Yes
LED Package	Uses +99.99% gold wire for superior performance and longevity
CRI	95+ high efficacy, gamut and fidelity
Binning	≤ 2 SDCM
IP Ratings	IP22 (dry location) & IP67 (wet location)

## Ultra Slim LED Lighting

An ultra slim 4mm wide high-density profile product with 238 LEDs per meter. Available on its own or within an available channel portfolio.



Power Consumption	W/ft: 3.7 W/m: 12.14
Flux Output (lm/m, lm/ft)	740-855 / 225-260
Color Temperature (K)	2200, 2500, 2700, 3000, 3500, 4000, 5000 Other CCTs available upon request
Profile (mm/inches)	4.0 / 0.16
Cut Points (mm/inches)	29.4 / 1.16
LEDs/m	238
Dimmable	Yes
LED Package	Uses +99.99% gold wire for superior performance and longevity
CRI	95+ high efficacy, gamut and fidelity
Binning	≤ 2 SDCM
IP Ratings	IP22 (dry location)

## High Density LED Lighting

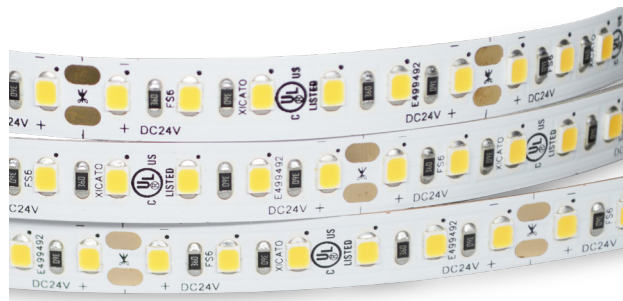
A small profile product with 700 LEDs per meter provides superior performance on its own or within an available channel portfolio. This line also includes ultra slim 4mm wide high-density products.



Power Consumption	W/ft: 3.0, 4.4, 5.0, 6.6 W/m: 9.84, 14.43, 16.40, 21.65
Flux Output (lm/m, lm/ft)	585-1560 / 188-476
Color Temperature (K)	2200, 2500, 2700, 3000, 3500, 4200, 5000 Other CCTs available upon request
Profile (mm/inches)	10.0 / 0.39
Cut Points (mm/inches)	10.0 / 0.39
LEDs/m	700
Dimmable	Yes
LED Package	Uses +99.99% gold wire for superior performance and longevity
CRI	95+ high efficacy, gamut and fidelity
Binning	≤ 2 SDCM
IP Ratings	IP22 (dry location) & IP67 (wet location)

## Full Spectrum LED Lighting

Covering the full spectrum of visible light, this light closely matches the spectrum of natural light that delivers a healthier light experience by minimizing the potential negative effects of artificial light.



Power Consumption	W/ft: 3.0, 4.4, 5.0, 6.0 W/m: 9.84, 14.43, 16.40, 19.68
Flux Output (lm/m, lm/ft)	750 - 1330 / 228-405
Color Temperature (K)	4000, 5000, 5700 Other CCTs available upon request
Profile (mm/inches)	10.0 / 0.39
Cut Points (mm/inches)	50.0 / 1.97
LEDs/m	120
Dimmable	Yes
LED Package	Uses +99.99% gold wire for superior performance and longevity
CRI	95+ high efficacy, gamut and fidelity
Binning	≤ 3 SDCM
IP Ratings	IP22 (dry location) & IP67 (wet location)

## Side Emitting LED Lighting

A unique linear design with surface-mount LED chips that project light at a 90° angle (parallel to the surface) allowing for hidden light sources in those hard to light places. Perfect for wall grazing lighting options.



Power Consumption	W/ft: 3.0 W/m: 9.84
Flux Output (lm/m, lm/ft)	660-680 / 200 – 210
Color Temperature (K)	2700, 3000, 3500
Profile (mm/inches)	5.0 / 0.2
Cut Points (mm/inches)	50.0 / 1.97
LEDs/m	120
Dimmable	Yes
LED Package	Standard Wires
CRI	90+ high efficacy
Binning	≤ 5 SDCM
IP Ratings	IP22 (dry location) & IP67 (wet location)

## Dynamic Linear Lighting

### Tunable White

Dynamic white light from 2200-6500 CCT ranges offering a much higher density of LEDs. The superior specs are achieved with smaller CCT ranges of 2200-3000 and 2400-3500. Three ranges available.



Power Consumption	W/ft: 3.0 - 6.0 W/m: 9.86 - 19.68
Flux Output (lm/m, lm/ft)	<657-1226 / <200-373
Color Temperature (K)	2200-3000, 2400-3500, 2700-6500
Profile (mm/inches)	10.0 / 0.39
Cut Points (mm/inches)	25 / 0.98
LEDs/m	240
Dimmable	Yes
LED Package	Uses +99.99% gold wire for superior performance and longevity
CRI	96+ high efficacy, gamut and fidelity
Binning	≤ 2 SDCM
IP Ratings	IP22 (dry location) & IP67 (wet location)

# Dynamic Linear Lighting

## Dim to Warm

Dim to Warm is designed with superior performance allowing white color temperature to warm as intensity is reduced. 10-year warranty makes this a stand-out in the lighting industry.



Power Consumption	W/ft: 3.2 W/m: 10.5
Flux Output (lm/m, lm/ft)	<700 / <213
Color Temperature (K)	2200 - 4000
Profile (mm/inches)	10.0 / 0.39
Cut Points (mm/inches)	62.5 / 2.46
LEDs/m	224
Dimmable	Yes
LED Package	Uses +99.99% gold wire for superior performance and longevity
CRI	95+ high efficacy, gamut and fidelity
Binning	≤ 2 SDCM
IP Ratings	IP22 (dry location) & IP67 (wet location)

## RGBW

Dynamic illumination effects with saturated colors, hues and white light (3000K) with advanced on-board circuitry for a 4-channel driver.



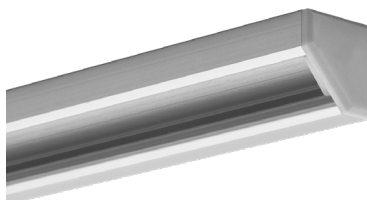
Power Consumption	W/ft: 7.6 W/m: 25
Flux Output (lm/m, lm/ft)	1150 / 350
Color Temperature (K)	W=3000K
Profile (mm/inches)	12.0 / 0.47
Cut Points (mm/inches)	62.5 / 2.46
LEDs/m	192
Dimmable	Yes
LED Package	Advanced on-board circuitry for a 4-channel driver
CRI	95+ high efficacy, gamut and fidelity
Binning	≤ 2 SDCM
IP Ratings	IP22 (dry location)

## Aluminum Extrusions

Here's just a few of the many high quality channels offered by Xicato. You can find the full portfolio with specification details at [XCC Channel and Lens Collection Guide](#).



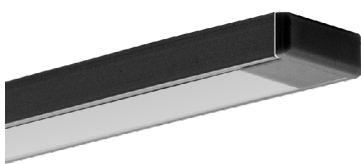
Standard Square



Standard 45



Specialty Focus



Standard Slim Black



Standard Micro Square

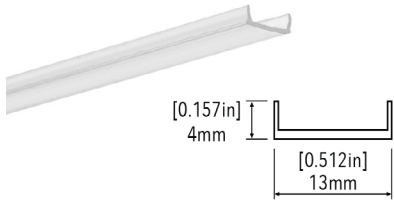


Standard In-Ground

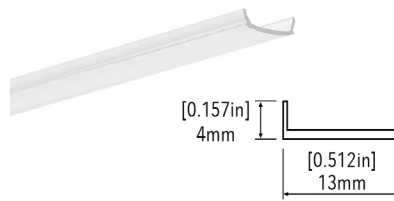


## Lenses and Covers

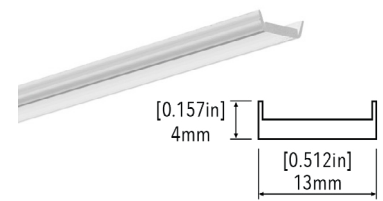
Xicato offers a complete portfolio of approved connectors. Please visit [Xicato.com/xfl](http://Xicato.com/xfl) to learn more.



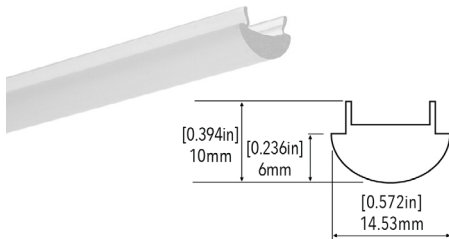
Universal Clear & Frosted



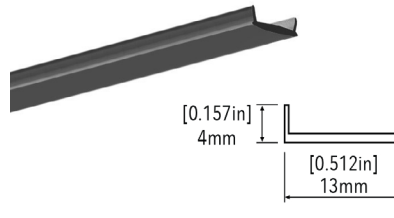
Universal Clear & Frosted Pro



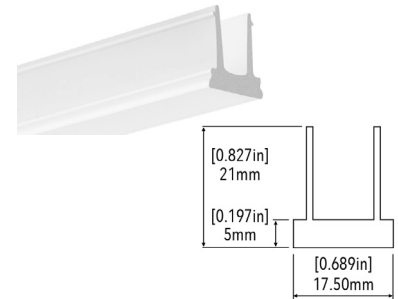
Extreme Clear & Frosted



Focusing Lens



Black Transition Lens



In-Ground Frosted Lens

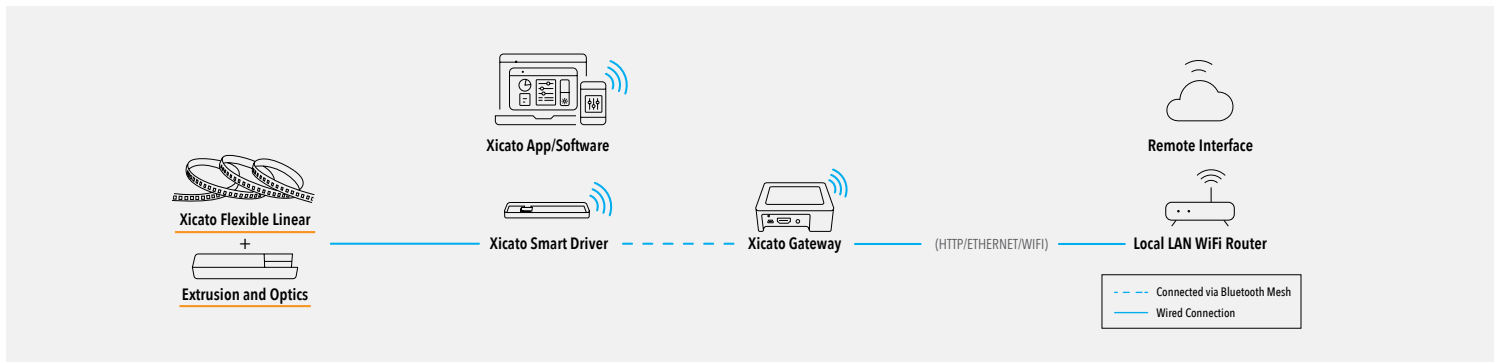
## Power Options

A broad selection of approved 3rd party AC and DC drivers with 0-10V, PWM, DALI and Xicato Bluetooth Mesh inputs at a wide range of power outputs are available for smart wireless controls.

Inputs	120V AC, 240V AC and 277V AC
Outputs	24V DC
Wattages	Ranging between 10W to 100W
Dimmable	Yes

## Xicato Controls

The XFL Portfolio is part of Xicato's comprehensive end-to-end system energizing environments through brilliant lighting and Smart Control systems.



For our complete catalog of connected products, visit [xicato.com/smartcontrols](http://xicato.com/smartcontrols).



#### **Xicato Global Headquarters**

102 Cooper Court  
Los Gatos, CA 95032

#### **Contact Us**

Tel: +1 866 223 8395  
info@xicato.com

### **About Xicato Inc.:**

Xicato is defining the future of smart buildings, delivering the absolute best quality, highest performing, most reliable, and one of the broadest portfolios of spot light sources and linear lighting solutions; world-class Bluetooth enabled LED drivers; as well as other wirelessly connected intelligent devices including sensors, switches, gateways, controls electronics, and software; plus, installation and commissioning services. Xicato's solutions inspire architects, designers and building owners to create beautiful and healthier environments with smarter and connected experiences. With an installed base of over 10 million nodes, spanning thousands of locations in over 30 countries, and backed by a strong team of innovators based in Silicon Valley, Xicato continues to stay ahead of customer needs in a variety of verticals including the world's most renowned museums and cathedrals, retail shops and hotels, offices and hospitals.

For further information, visit [www.xicato.com](http://www.xicato.com).

For the most up-to-date data sheet, please visit [xicato.com/resources](http://xicato.com/resources).