

# ECOSENSE®

PRODUCT GUIDE

ECOSENSE | 837 NORTH SPRING STREET, SUITE 103, LOS ANGELES, CA 90012

# FREEDOM TO CREATE

**STATUS QUO IS A NO GO.** At ECOSENSE, we are never satisfied with ordinary lighting. Other lighting may do a good job, but sometimes good isn't enough. We scrutinize every detail to achieve the most beautiful light—a dedication to develop advanced, high performance, energy-saving luminaires that meet exacting demands and creativity.

---

<b>04</b>	RISE™
<b>20</b>	TROV
<b>31</b>	SLIM COVE DIM™
<b>33</b>	CONTROL MODULE
<b>34</b>	ERIA
<b>36</b>	PRODUCT SPECIFICATIONS

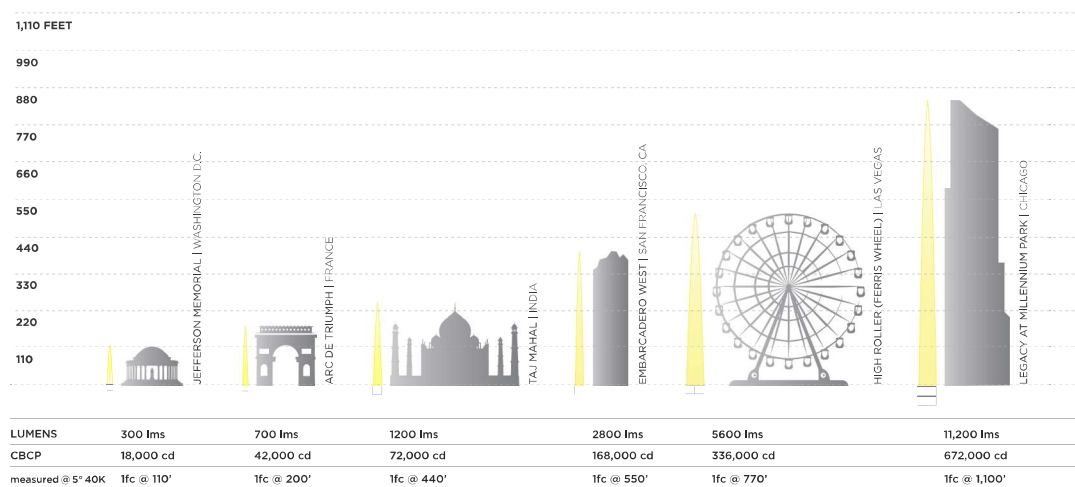
# PRODUCTS



## RISE™

---

**INTRODUCING RISE.** The smallest, most powerful directional lighting system of its kind. Loaded with patented new features, RISE delivers the most complete series of flood, landscape and accent lighting that was carefully designed to match TROV for consistent and uniform light across any project.



RISE™

## STRONGEST CBCP

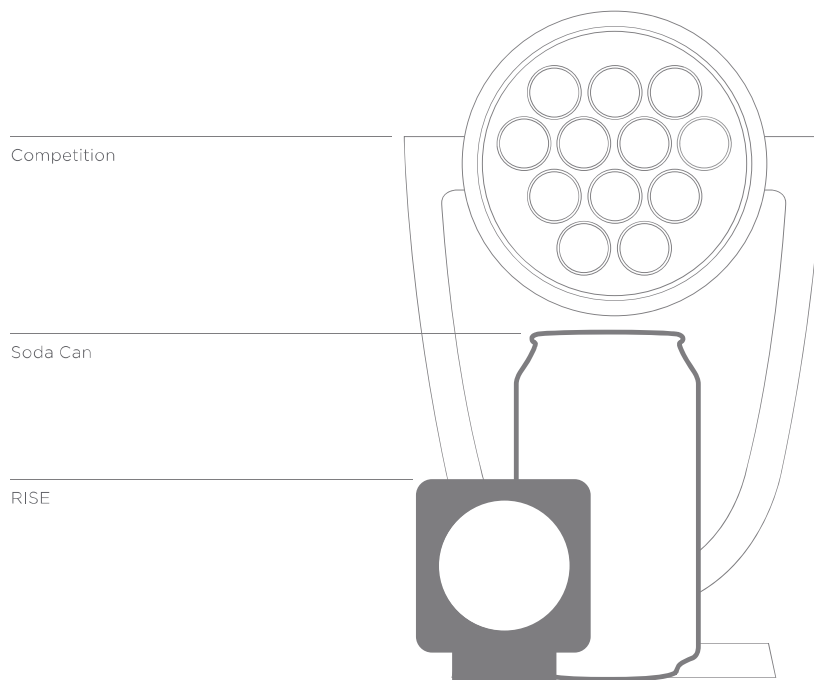
**SCALABLE POWER.** RISE delivers two times more Center Beam Candle Power than the market average across a broad range of lumen packages.



RISE™

LASER SPOT

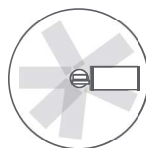
**FOCUSED LIGHT.** RISE has an efficient optical system delivering 12 different beam angles and the only 5° laser spot beam option on the market.



RISE™

POWERFULLY COMPACT

**MIGHTY SMALL.** Rise is the world's most compact floodlight delivering over 17,400 lumens of robust brilliance.



360° Pan



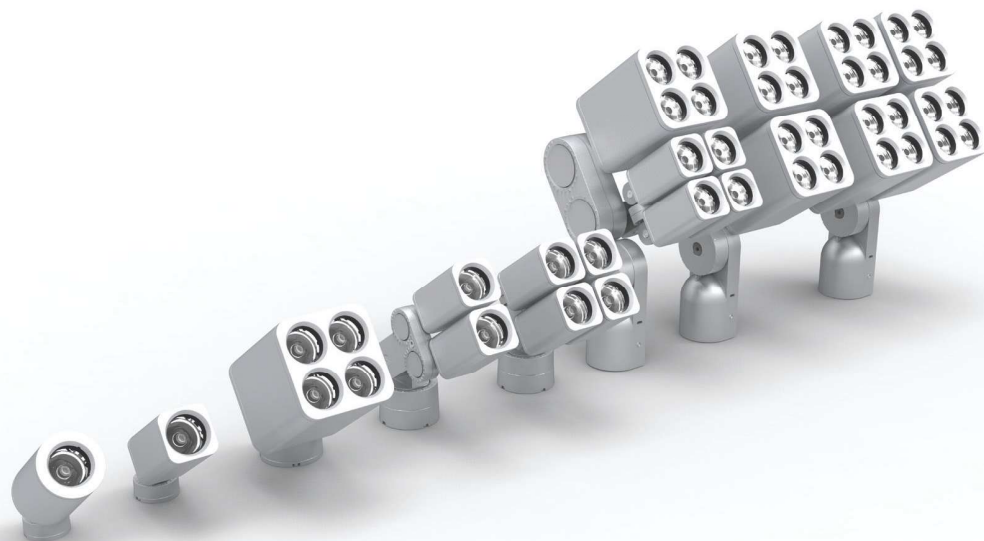
180° Tilt

# RISE™

## MACRO LOCK

**ULTIMATE FLEXIBILITY.** Patent-pending MACRO™ Lock feature allows simple one-tool adjustment for both 180° tilt and 360° pan.





RISE™

SCALABLE

**DYNAMIC BRACKETRY.** RISE is uniquely scalable from one single installation point, delivering lumen packages and fixture aiming for every need with over 500,000 product variations available.

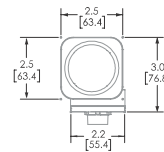
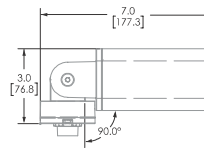
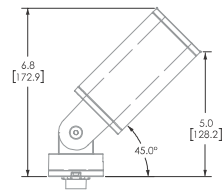
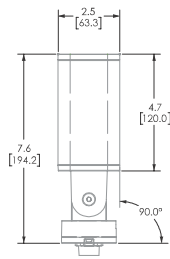


RISE™

---

AHEAD OF THE CURVE

**GREAT DESIGN ALL AROUND.** There's even more versatility to RISE, with four standard finishes, RAL custom colors and a round form factor option.

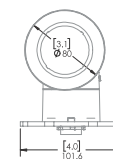
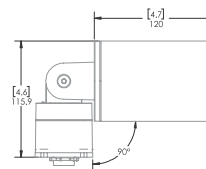
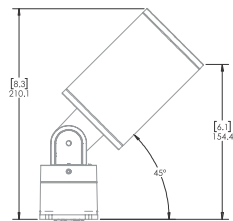
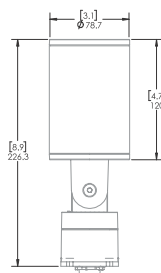


# RISE™

## RISE | F080

**SMALL WONDER.** Thoughtfully designed from the ground up, RISE F080 is an ultra-compact, exterior-rated LED luminaire. Delivering up to 1,140 lumens in a variety of beam angles, RISE F080 is ideal for spot, accent, landscape and floodlight applications.

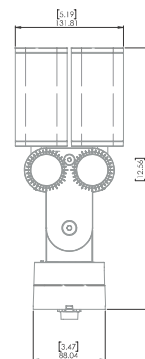
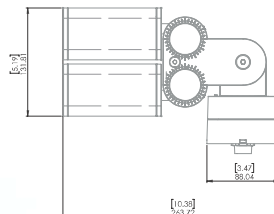
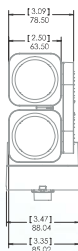
- Dimmable using ELV dimmers
- Power on Board
- MACRO Lock™: 180° tilt and 360° aiming
- CCT: 2,200K, 2,500K, 2,700K, 3,000K, 3,500K, 4,000K, 5,000K, 6,500K
- CRI: 80+, 90+
- Field Interchangeable Lens
- Beam options: 5°, 10°, 15°, 20°, 40°, 60°, 70°, 90°, 15° X 60°, 60° X 15°, 30° X 60°, 60° X 30°
- Lumen packages: 429 lm, 761 lm, and 1,140 lm @4,000K @40°
- Efficacy: 99 lm/W @4,000K, 11.5W, 40°
- IP66, UL wet location
- ETL Certified, CE Mark
- Color Finish: Black, Bronze, Marine Grade, Silver, White, Custom



# RISE™

## RISE | F080 SINGLE ROUND

- Dimmable using ELV dimmers
- Power on Board
- MACRO Lock™: 180° tilt and 360° aiming
- CCT: 2,200K, 2,500K, 2,700K, 3,000K, 3,500K, 4,000K, 5,000K, 6,500K
- CRI: 80+, 90+
- Field Interchangeable Lens
- Beam options: 5°, 10°, 15°, 20°, 40°, 60°, 70°, 90°, 15° X 60°, 60° X 15°, 30° X 60°, 60° X 30°
- Lumen packages: 429 lm, 761 lm, and 1,140 lm @ 4,000K @ 40°
- Efficacy: 99 lm/W @ 4,000K, 11.5W, 40°
- IP66, UL wet location
- ETL Certified, CE Mark
- Color Finish: Black, Bronze, Marine Grade, Silver, White, Custom

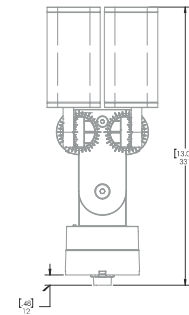
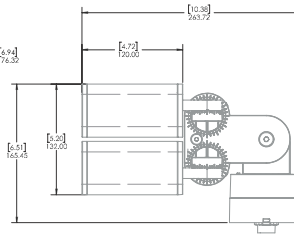
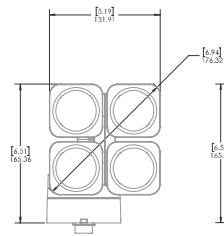


RISE™

## RISE | F080 DUO

**DOUBLE THE LUMEN POWER.** Rise F080 Duo pairs up two Rise F080 Single units using a single-point bracket. From one single installation point, lumen power can increase (up to 2,280 lumens) and/or aim each light fixture in different directions. Each fixture head can be specified with a unique beam angle and lumen output for application specific needs.

- Dimmable using ELV dimmers
- Power on Board
- MACRO Lock™: 180° tilt and 360° aiming
- CCT: 2,200K, 2,500K, 2,700K, 3,000K, 3,500K, 4,000K, 5,000K, 6,500K
- CRI: 80+, 90+
- Field interchangeable Lens
- Beam options: 5°, 10°, 15°, 20°, 40°, 60°, 70°, 90°, 15° X 60°, 60° X 15°, 30° X 60°, 60° X 30°
- Lumen packages: 858 lm, 1,522 lm, and 2,280 lm @4,000K @40°
- Efficacy: 107 lm/W @4,000K, 23W, 40°
- IP66, UL wet location
- ETL Certified, CE Mark
- Color Finish : Black, Bronze, Marine Grade, Silver, White, Custom

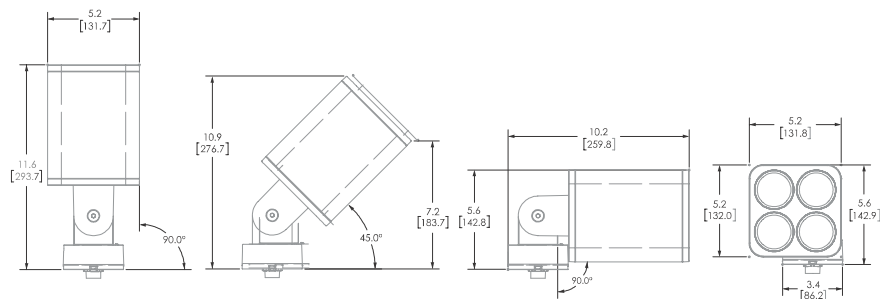


## RISE™

### RISE | F080 QUAD

**QUADRUPLE THE LUMEN POWER** . Rise F080 Quad connects four Rise F080 Single units using a single-point bracket. From one single installation point, lumen power can increase (up to 4,560 lumens) and/or aim each light fixture in different directions. Each fixture head can be specified with a unique beam angle and lumen output for application specific needs.

- Dimmable using ELV dimmers
- Power on Board
- MACRO Lock™: 180° tilt and 360° aiming
- CCT: 2,200K, 2,500K, 2,700K, 3,000K, 3,500K, 4,000K, 5,000K, 6,500K
- CRI: 80+, 90+
- Field Interchangeable Lens
- Beam options: 5°, 10°, 15°, 20°, 40°, 60°, 70°, 90°, 15° X 60°, 60° X 15°, 30° X 60°, 60° X 30°
- Lumen packages: 1,716 lm, 3,044 lm, and 4,560 lm @ 4,000K @ 40°
- Efficacy: 99 lm/W @ 4,000K, 46W, 40°
- IP66, UL wet location
- ETL Certified, CE Mark
- Color Finish: Black, Bronze, Marine Grade, Silver, White, Custom

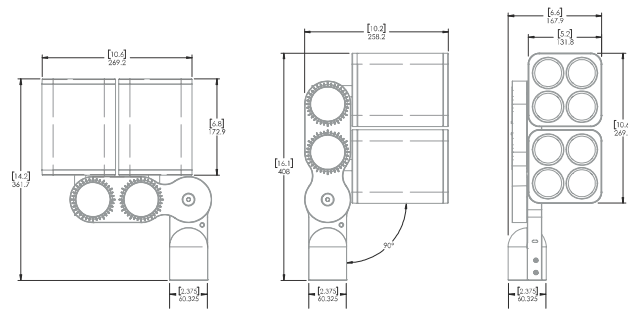


# RISE™

## RISE | F170

**LOADED WITH OPTIONS.** For more punch, RISE F170 is a powerful and compact exterior-rated LED luminaire, delivering up to 4,350 lumens. With the most extensive collection of beam angles, this luminaire can be used for spot, accent, landscape and floodlight applications.

- Dimmable using ELV dimmers
- Power on Board
- MACRO Lock™: 180° tilt and 360° aiming
- CCT: 2,200K, 2,500K, 2,700K, 3,000K, 3,500K, 4,000K, 5,000K, 6,500K
- CRI: 80+, 90+
- Field Interchangeable Lens
- Beam options: 5°, 10°, 15°, 20°, 40°, 60°, 70°, 90°, 15° X 60°, 60° X 15°, 30° X 60°, 60° X 30°
- Lumen packages: 1,633 lm, 2,955 lm, and 4,350 lm @4,000K @40°
- Efficacy: 114 lm/W @4,000K, 38W, 40°
- IP66, UL wet location
- ETL Certified, CE Mark
- Color Finish: Black, Bronze, Marine Grade, Silver, White, Custom



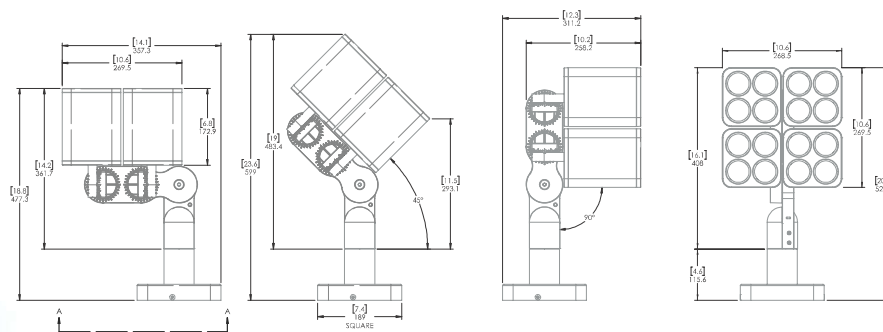
## RISE™

### RISE | F170 DUO

**DOUBLE THE LUMEN POWER.** Rise F170 Duo pairs up two Rise F170 Single units using a single-point bracket. From one single installation point, lumen power can increase (up to 8,700 lumens) and/or aim each light fixture in different directions. Each fixture head can be specified with a unique beam angle and lumen output for application specific needs.

- Dimmable using ELV dimmers
- Power on Board
- MACRO Lock™: 180° tilt and 360° aiming
- CCT: 2,200K, 2,500K, 2,700K, 3,000K, 3,500K, 4,000K, 5,000K, 6,500K
- CRI: 80+, 90+
- Field interchangeable Lens
- Beam options: 5°, 10°, 15°, 20°, 40°, 60°, 70°, 90°, 15° X 60°, 60° X 15°, 30° X 60°, 60° X 30°
- Lumen packages: 3,266 lm, 5,910 lm, and 8,700 lm @ 4,000K @ 40°
- Efficacy: 112 lm/W @ 4,000K, 78W, 40°
- IP66, UL wet location
- ETL Certified, CE Mark
- Color Finish: Black, Bronze, Marine Grade, Silver, White, Custom



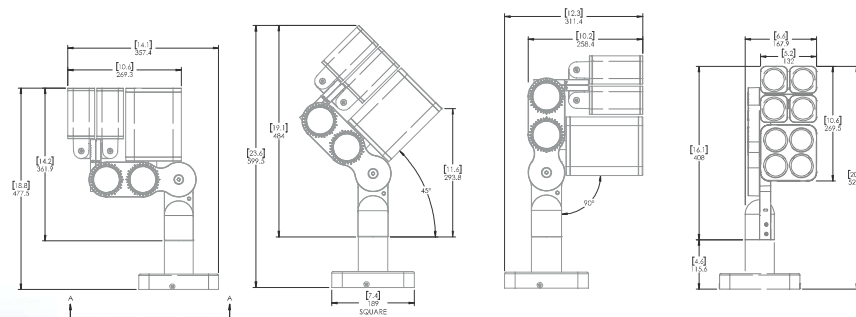


RISE™

## RISE | F170 QUAD

**QUADRUPLE THE LUMEN POWER.** Rise F170 Quad connects four Rise F170 Single units using a single-point bracket. From one single installation point, **lumen power can increase (up to 11,200 lumens)** and/or aim each light fixture in different directions. Each fixture head can be specified with a unique beam angle and lumen output for application specific needs.

- Dimmable using ELV dimmers
- Power on Board
- MACRO Lock™: 180° tilt and 360° aiming
- CCT: 2,200K, 2,500K, 2,700K, 3,000K, 3,500K, 4,000K, 5,000K, 6,500K
- CRI: 80+, 90+
- Field Interchangeable Lens
- Beam options: 5°, 10°, 15°, 20°, 40°, 60°, 70°, 90°, 15° X 60°, 60° X 15°, 30° X 60°, 60° X 30°
- Lumen packages: 6,608 lm, 11,820 lm, and 17,400 lm @ 4,000K @ 40°
- Efficacy: 102 lm/W @ 4,000K, 13W, 5°
- IP66, UL wet location
- ETL Certified, CE Mark
- Color Finish: Black, Bronze, Marine Grade, Silver, White, Custom



# RISE™

## RISE | F380

**UNIQUE CONFIGURATIONS.** Rise F380 Combo is a unique configuration that groups four Rise F080 Single units and one Rise F170 Single unit – for a total of five light units, allowing Lighting Designers to illuminate the most challenging applications. Each fixture head can be specified with a unique beam angle and lumen output for application specific needs.

- Dimmable using ELV dimmers
- Power on Board
- MACRO Lock™: 180° tilt and 360° aiming
- CCT: 2,200K, 2,500K, 2,700K, 3,000K, 3,500K, 4,000K, 5,000K, 6,500K
- CRI: 80+, 90+
- Field Interchangeable Lens
- Beam options: 5°, 10°, 15°, 20°, 40°, 60°, 70°, 90°, 15° X 60°, 60° X 15°, 30° X 60°, 60° X 30°
- Lumen packages: 3,349 lm, 5,999 lm, and 3,349 lm @ 4,000K @ 40°
- Efficacy: 106 lm/W @ 4,000K, 84W, 40°
- IP66, UL wet location
- ETL Certified, CE Mark
- Color Finish: Black, Bronze, Marine Grade, Silver, White, Custom



Wall Mount Arm



Full Snoot



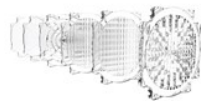
Half Snoot



Surface Mount Plate



Multi Up Surface Mount Plate



Field-Interchangeable Lenses



Half Snoot Round



Full Snoot Round



Canopy Cover



Honeycomb Louver



Slip Fitter



Single Gang Box Cover



Tree Mount



Perma Post



Ground Stake

RISE™

## ACCESSORIES

**CUSTOM FIT.** RISE includes a line of custom-designed accessories to meet any design challenge. Use of specialized accessories creates unique applications and alternative mounting option.

Additional accessories available online at [www.ecosenselighting.com](http://www.ecosenselighting.com)

## TROV<sup>®</sup>

---

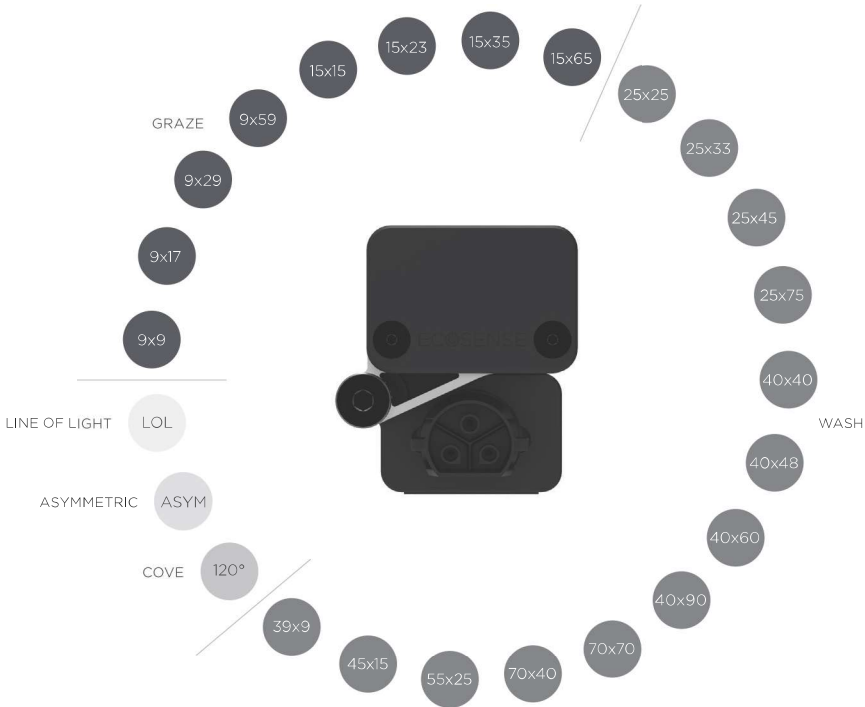
**START CREATING.** TROV is the only LED linear platform designed from the ground up. Layer by layer, we meticulously designed every detail down to the screws. Our labor and passion can be experienced in the thinnest, most advanced and configurable linear LED platform. A platform that is beautiful, adaptive and smart. A platform that enables over 24,000 product configurations.



TRÖV®

OPTICS

**WE KNOW YOU LIKE OPTIONS.** Our team of engineers meticulously designed an optical system with the most extensive beam angle assortment in the industry. Choose from a wide range of cove, graze, wall wash, line of light and a new, powerful asymmetric beam distribution.



# TROV<sup>®</sup>

## DIM TO ZERO

**FLICKER FREE.** TROV features the best dimming available for a line voltage LED linear. Dimming that puts you in ultimate control. Using a new hybrid digital power supply, TROV delivers beautiful light smoothly and without flicker all the way down to zero percent input power.



TROV®

FLIP TO FLAT™

**BEND OVER BACKWARDS.** Flip to Flat is our one-of-a-kind feature that easily allows 180° rotation while reducing the height to 24.7mm (.97"). This ultra low-profile luminaire delivers light with the utmost flexibility.



# TROV®

## ASYMMETRIC

**A LEAGUE OF THEIR OWN.** TROV Asymmetric not only delivers powerful and uniform light, but also is recognized as the smallest line voltage asymmetric luminaire on the market today. This uniquely compact profile allows for beautiful, consistent illumination without hot spots or shadows, perfect for illuminating ceilings.



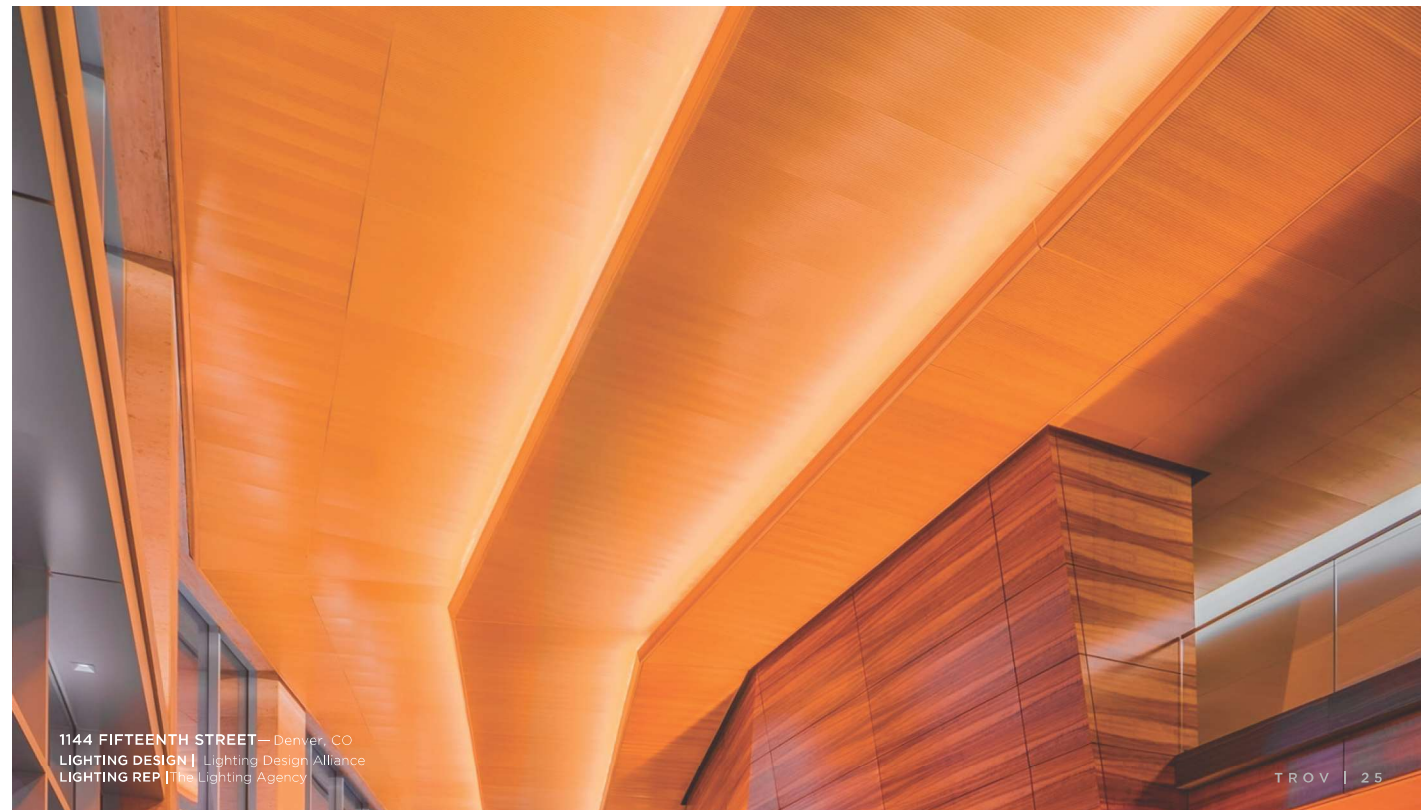


# TROV®

---

## COVE

**CREATE DRAMA.** TROV is an ideal way to create dramatic entry ways, accent unique architectural details or illuminate the edge of a ceiling or wall. Leading the industry in lumen packages, color temperatures and high-CRI options, TROV offers customers the most flexibility and versatility in cove lighting.



1144 FIFTEENTH STREET — Denver, CO  
LIGHTING DESIGN | Lighting Design Alliance  
LIGHTING REP | The Lighting Agency

TROV | 25

# TROV®

## WASH + GRAZE

**PERMISSION TO BE BOLD.** With the largest selection of beam angles available, TROV is the only solution for grazing or washing surfaces with light. When grazing, use a closely-positioned narrow beam angle to vividly illuminate a surface adding deep contrast to any texture. To wash a surface or structure with light, use a wide beam angle to eliminate shadows and focus the light intensely where it belongs.



SCIENCE MUSEUM — London, England, UK  
LIGHTING DESIGN | dha Design  
LIGHTING REP | ArchitaInment

TROV®

## LINE OF LIGHT

**TOP OF THE LINE.** TROV Line of Light delivers a beam of light that is ideal for creating eye-catching designs. This luminaire is also the best solution for hiding unsightly LED pixelation, especially when illuminating near reflective surfaces.

**LONG BEACH COURTHOUSE** — Long Beach, CA  
**LIGHTING DESIGN:** Horton Lees  
Brogden Lighting Design  
**LIGHTING REP:** Performance Lighting Systems

TROV®

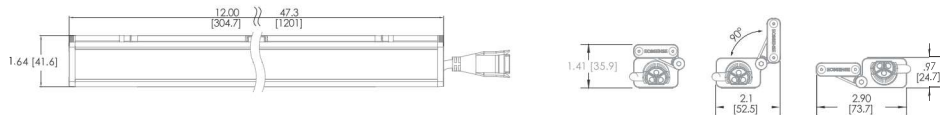
INTERIOR | L35

**LOW PROFILE.** An ultra-slim profile luminaire optimized for coves and indirect accent lighting applications. This luminaire features the exclusive Flip to Flat™ hinge, allowing vertical aiming from 0-180° with the thinnest and most compact profile available, measuring only 35mm (1.4") high.

- 120° beam spread
- Flicker-free dimming
- 2-step MacAdam ellipse
- Wattage and lumen package options from 2W to 12W per LF
- Efficacy up to 92Lm/W
- CCT: 2,200K, 2,500K,\* 2,700K, 3,000K, 3,500K, 4,000K, 5,000K
- Mono Colors • CRI options: 80+, 90+
- 110V-277 Multi-Volt
- IP54, UL damp location
- ETL Certified, CE Mark



\*2500K not available on 10W or 12W

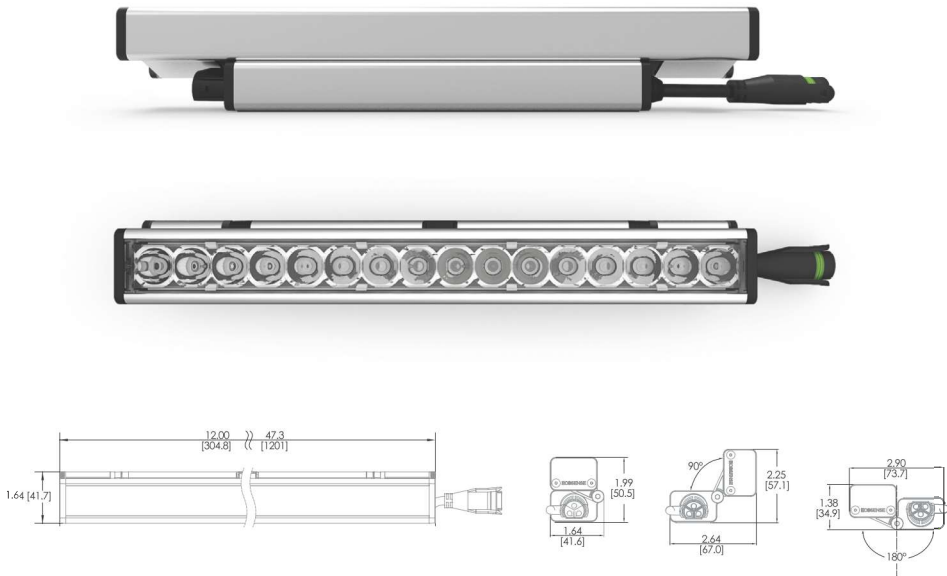


TROV®

INTERIOR + EXTERIOR | L50

**VERSATILITY AT ITS BEST.** Measuring in at only 50mm high, TROV L50 is the most adaptive fixture for any application requiring controlled optics. TROV not only brings you the smallest linear wall grazer and wall wash on the market today but it also delivers an asymmetric beam so uniform and powerful that it competes with fixtures three times its size.

- Flicker-free dimming
- 2-step MacAdam ellipse
- Wattage and lumen pack age options from 2W to 12W per LF
- Efficacy up to 95Lm/W • CCT: 2,200K, 2,700K, 3,000K, 3,500K, 4,000K, 5,000K
- 24 beam angle options—Cove, Graze, Wash, Line of Light, Asymmetric
- CRI options: 80+, 90+
- 110V-277 multi-volt
- Flip to Flat™ design
- Exterior: IP66, UL wet location
- Interior: IP54, UL damp location
- ETL Certified, CE Mark



TROV®

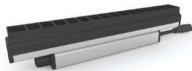
ACCESSORIES (INTERIOR + EXTERIOR)

**DESIGNED TO WORK TOGETHER.** TROV platform includes a line of custom-designed accessories to meet any design challenge. From exclusive louvers and adjustable brackets to specialized lenses and mounting arms, TROV accessories enable limitless applications.

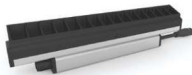
Additional accessories available online at [www.ecosenselighting.com](http://www.ecosenselighting.com)



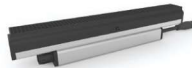
Angle Lock



Symmetrical Louver



Asymmetric Louver



Honeycomb Louver



Clear and Frosted Lens



Wire Box



Mounting Track



Fine-tune Adjustable Bracket



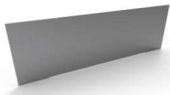
Landscape Stake



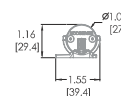
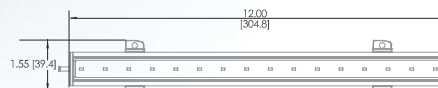
Wall Arm



90° Bracket



Masking Plate



## SLIM COVE DIM™

**POWERFULLY SMALL.** Slim Cove Dim is the smallest, line-voltage, 800 lumen/foot, luminaire on the market. single binning delivers superior color quality and color consistency between all Ecosense products.

- Dim to 10%, ELV reverse phase
- Ultra low profile
- Up to 123 lm/W
- Multi-volt 120-277VAC
- Single bin color matches Troy®
- 4 CCT options
- 80+ and 90+ CRI
- 4W up to 490lm/ft, 8W up to 820lm/ft





Wire Box



Cable



Switched Junction Box



Rocker Switch



Knife Edge Cover

## SLIM COVE DIM™

### ACCESSORIES (INTERIOR | SLIM COVE)

**TAILORED TO FIT.** Slim Cove Dim includes a line of custom-designed accessories to meet any design challenge. Specialized accessories create unique applications and alternative mounting options.



# CONTROL MODULE

## LDCM (0-10V ELV)

**SMOOTH CONTROL.** EcoSpec Linear Dimming Control Module is the only module in the LED luminaire industry to convert a 0-10V signal to an ELV dimmable signal, allowing ELV fixtures to be used flawlessly in any 0-10V application. Compatible with all EcoSpec and TROV products.

