

ECOSENSE®

TROV Slim®

Light efficiency:

108 Lumen/Watt

Light quality:

CRI: 84.2

Color temperature:

3538 K

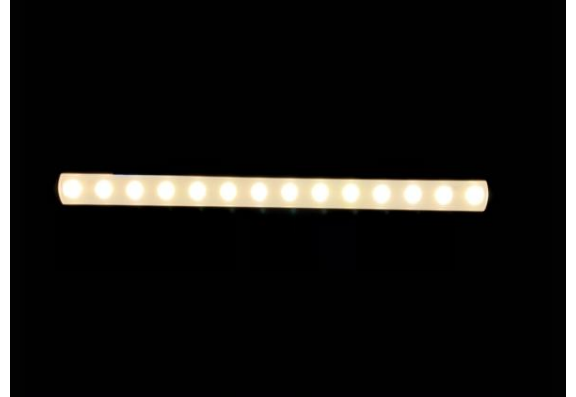
Output: 850 lm

Peak: 309 cd

Power: 7.9 W

PF: 0.98

8 PLANES



SKU:

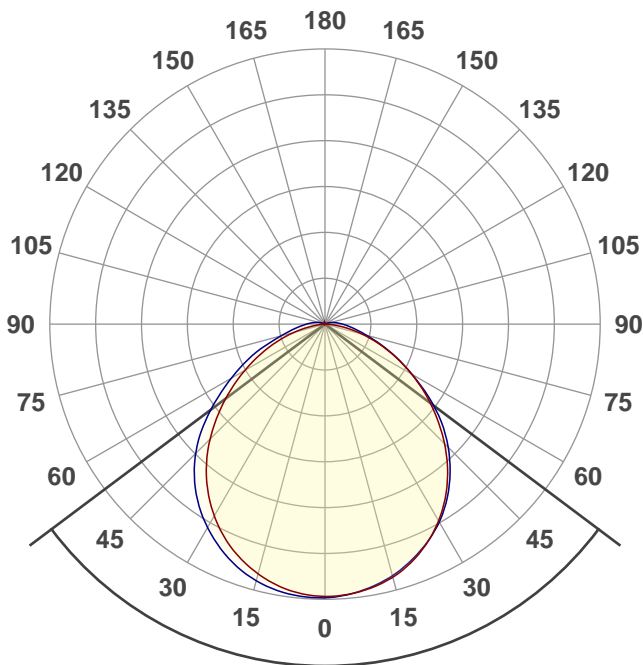
L30-I-12-08-35-80-MULT-120

Date and time:

11/3/2020 3:12:23 PM

Product name:

12" 3500K 80CRI 8Watt



Beam angle

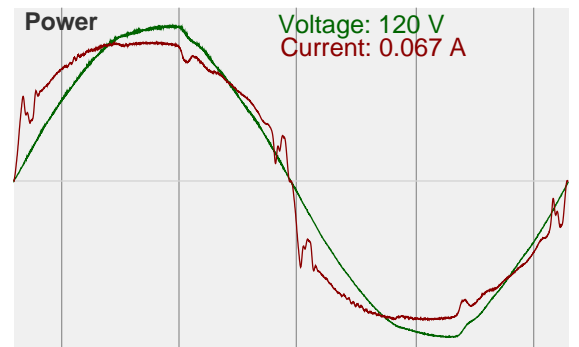
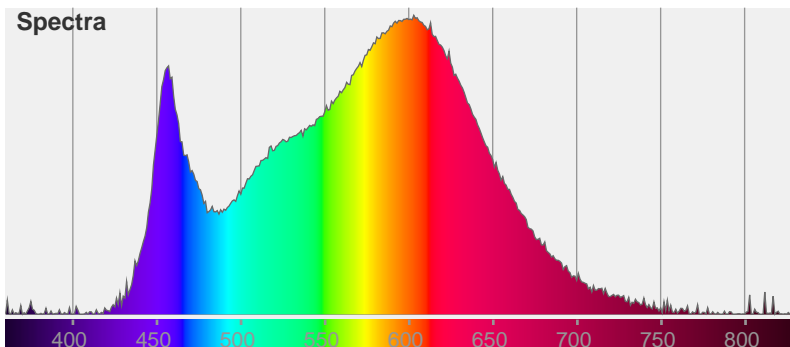
106.3°

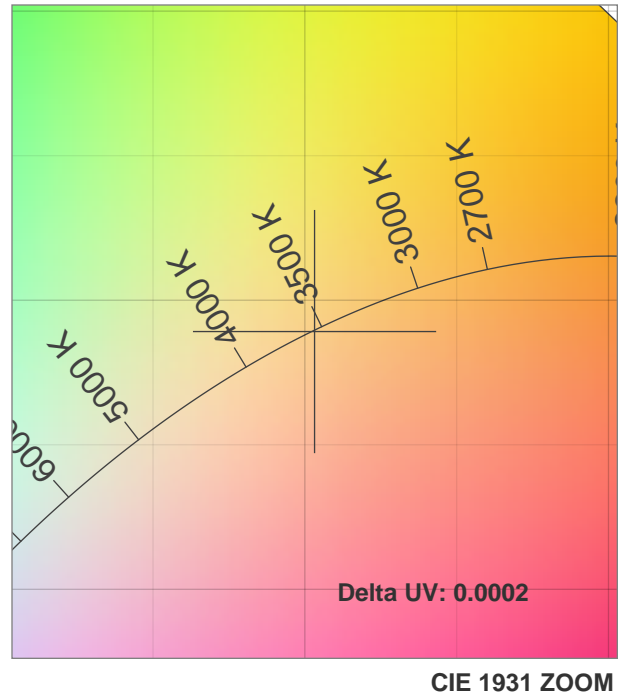
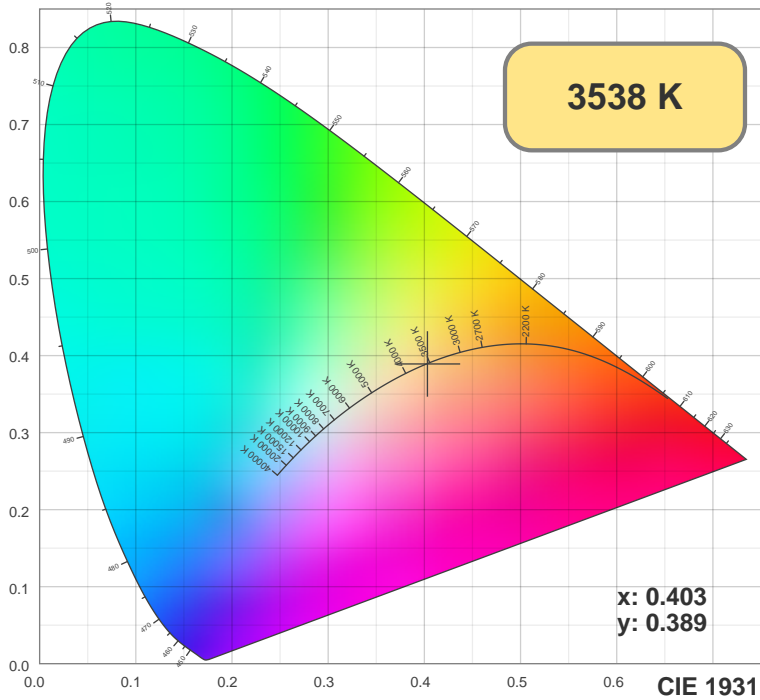
Color



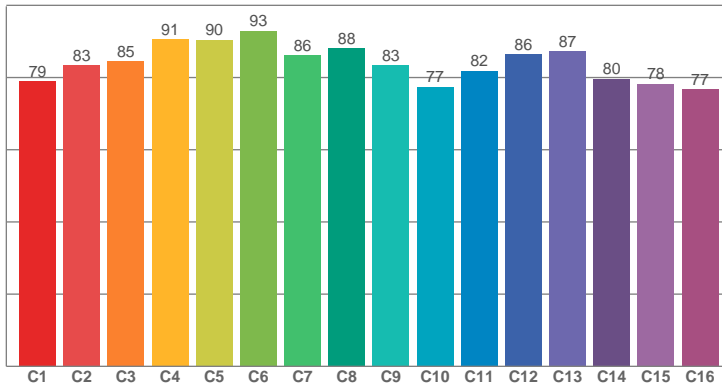
CIE1931
x: 0.403
y: 0.389

Spectra

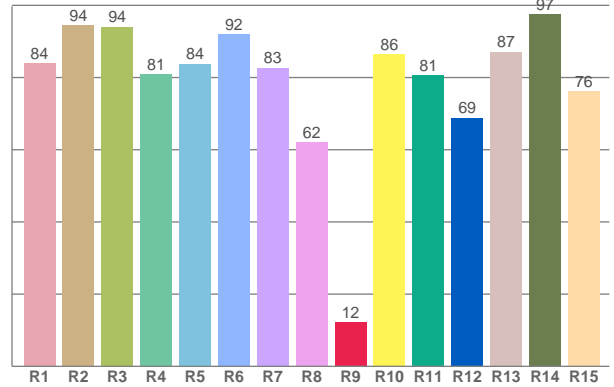




TM30: 84.1



CRI: 84.2 (R1-R8)



CRI R values, only R1-R8 are used to calculate final CRI value

R1	R2	R3	R4	R5	R6	R7	R8	R9	R10	R11	R12	R13	R14	R15
83.92	94.42	94.03	80.90	83.78	92.04	82.63	62.07	12.24	86.39	80.62	68.85	87.12	97.43	76.24

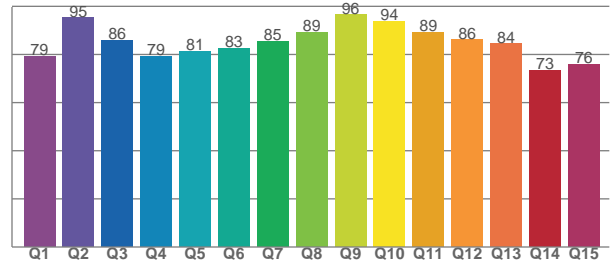
TM30 C values, 16 binned values out of total of 99 C values

C1	C2	C3	C4	C5	C6	C7	C8	C9	C10	C11	C12	C13	C14	C15	C16
78.96	83.41	84.52	90.50	90.47	92.90	86.12	88.10	83.44	77.47	81.82	86.39	87.32	79.58	78.27	76.78

CQS Q values

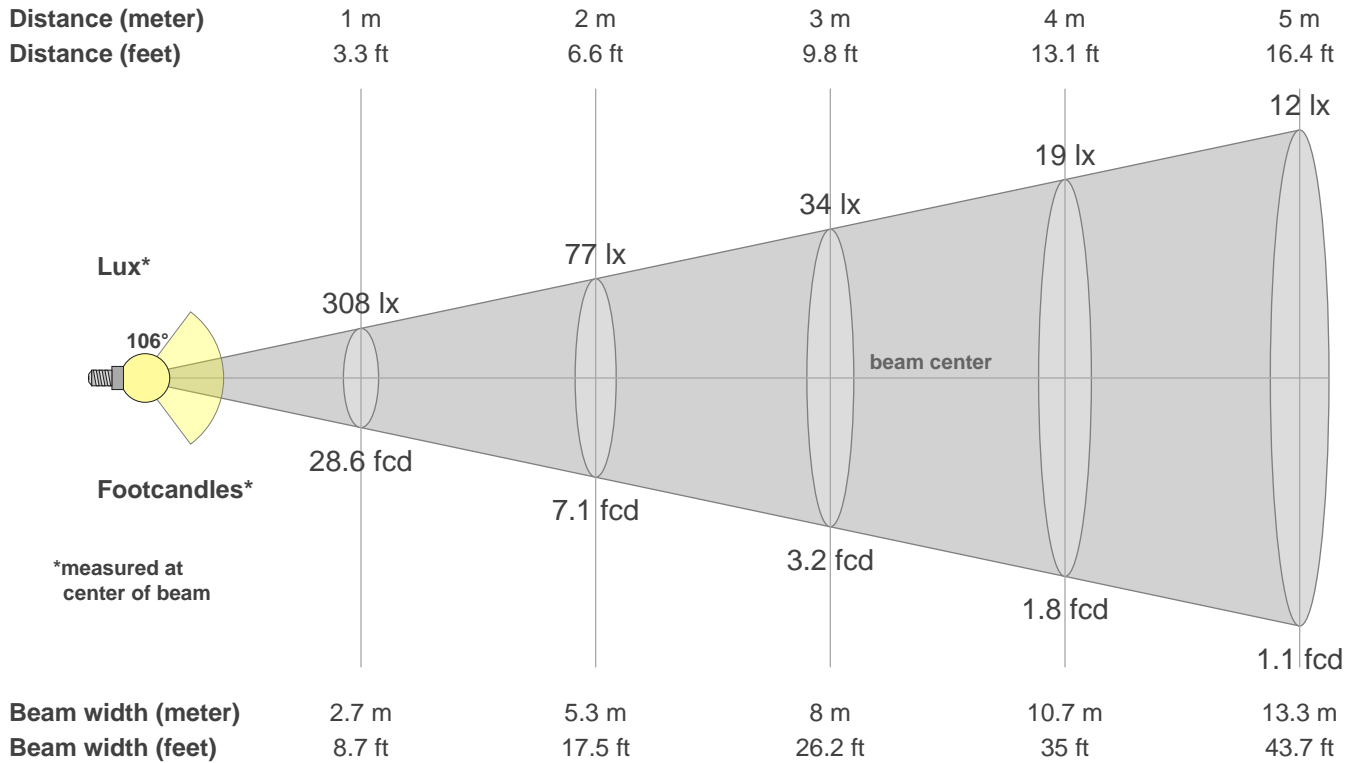
Q1	Q2	Q3	Q4	Q5	Q6	Q7	Q8	Q9	Q10	Q11	Q12	Q13	Q14	Q15
79.18	95.22	85.87	79.13	81.19	82.65	85.43	89.28	96.41	93.86	89.24	86.12	84.43	73.49	75.88

CQS: 83.8



Color parameters

CCT	CRI	CRI R9	TM30 Rf	TM30 Rg	CQS	x	y	u	v	Duv
3538 K	84.2	12.2	84.1	92.5	83.8	0.4	0.4	0.2	0.3	-0.0002



Intensities in 0° c-plane

0°	5°	10°	15°	20°	25°	30°	35°	40°	45°	50°	55°	60°	65°	70°	75°	80°	85°	90°	95°
308	306	302	295	285	272	256	237	215	191	165	139	113	88	65	43	24	9	1	1
100%	99%	98%	96%	93%	88%	83%	77%	70%	62%	54%	45%	37%	29%	21%	14%	8%	3%	0%	0%

Intensities in 90° c-plane

0°	5°	10°	15°	20°	25°	30°	35°	40°	45°	50°	55°	60°	65°	70°	75°	80°	85°	90°	95°
308	306	301	294	284	272	258	240	220	197	171	142	113	89	67	49	36	27	20	14
100%	99%	98%	95%	92%	88%	84%	78%	71%	64%	56%	46%	37%	29%	22%	16%	12%	9%	6%	5%

Intensities in 180° c-plane

0°	5°	10°	15°	20°	25°	30°	35°	40°	45°	50°	55°	60°	65°	70°	75°	80°	85°	90°	95°
308	305	300	292	280	267	250	230	208	183	157	130	105	80	58	37	19	6	1	1
100%	99%	97%	95%	91%	87%	81%	75%	68%	60%	51%	42%	34%	26%	19%	12%	6%	2%	0%	0%

Intensities in 270° c-plane

0°	5°	10°	15°	20°	25°	30°	35°	40°	45°	50°	55°	60°	65°	70°	75°	80°	85°	90°	95°
308	308	305	300	291	279	265	248	229	206	179	150	123	97	73	52	38	28	21	15
100%	100%	99%	97%	94%	91%	86%	81%	74%	67%	58%	49%	40%	32%	24%	17%	12%	9%	7%	5%

Beam angle 50%	Field angle 10%	Cutoff angle 2.5%	Intensity ratio in 120° cone	Intensity ratio in 90° cone
106.3°	162.3°	192.0°	78.5%	54.7%