

PRODUCT CATALOG

June 2021

Linear Lighting and Controls





Index

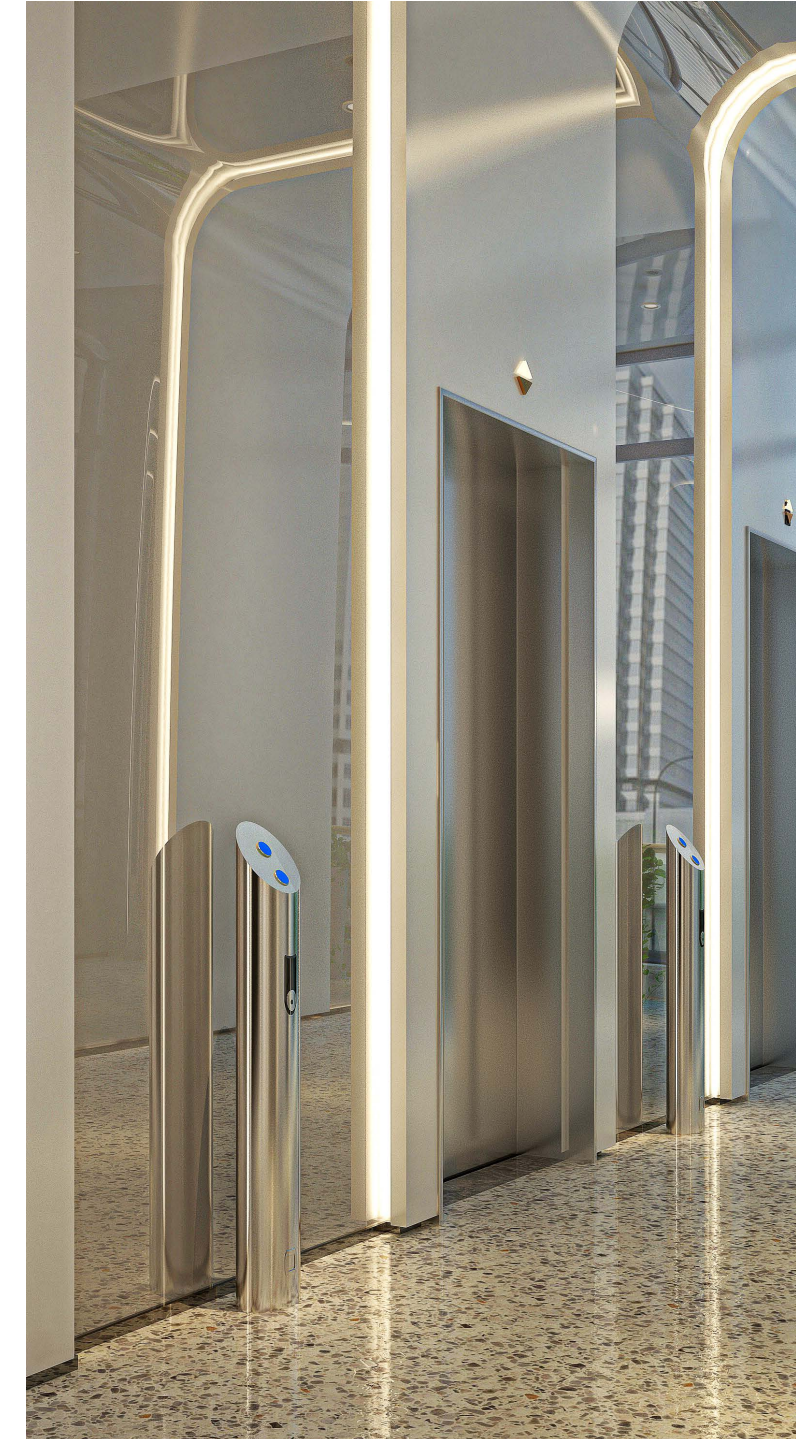
- 03. About our Company
- 04. Xicato Flexible Linear - XFL
- 14. Xicato Channel Collection - XCC
- 22. Xicato Linear Accessories - XLA
- 25. Xicato Smart Controls
- 32. Meanwell Drivers
- 33. Available Soon
- 34. Product Selector
- 35. How to Order

About Our Company

Xicato is defining the future of smart buildings delivering the absolute best quality, highest performing, and most reliable portfolio of spot and linear lighting with Bluetooth wireless controls.

Xicato's well-known light sources have set the standard for quality of light and are installed in thousands of locations over 30 countries – they are the go-to option when people care about the quality of light.

Xicato's smart lighting solutions inspire architects, designers and building owners to create beautiful and healthier environments with smarter and connected experiences.





TRANSFORM YOUR SPACE

Channels

Xicato offers the widest selection of high quality aluminum extruded channels to meet every requirement - you want it, we have it, even if it's not advertised. Our channels, combined with a wide array of covers, end caps, and accessories, offer universal use for every application. You now have unlimited imagination to transform your space.

Controls

Xicato's Bluetooth® Lighting Controls are installed all over the world and integrated with a range of luminaires and building management systems. They deliver cost savings from installation through operation, and provide scene-setting capabilities that are second to none. Smart controls enable building energy efficiencies, reduced maintenance and operational costs, resulting in a more productive and comfortable environment.

XICATO FLEXIBLE LINEAR LIGHTING

STATIC WHITE
HIGH DENSITY
FULL SPECTRUM
SIDE EMITTING
ULTRA SLIM
TUNABLE WHITE
DIM TO WARM





Xicato's new offering of LED linear lighting solutions is exactly the type of product we were looking for – it is superior quality and has the latest technology from a brand that has been trusted in the market for many years.

Sean Hounslow, Managing Director, Prime Light, UK



BEST OF BREED BENEFITS

**Unmatched Performance of CRI, R9,
Fidelity & Gamut**



24V across entire portfolio

Broad range of CCTs & common wattages

Supported by Xicato Bluetooth Mesh Controls

Superior construction for higher reliability, long lifespan and heat management

IP22 dry location & IP67 wet location

10-year warranty across all XFL products

Lighting design uniformity for both Xicato spot and linear lighting

XFL XICATO FLEXIBLE LINEAR



Static White

95 CRI, 10mm small profile, energy efficient, easy to install on its own or in a channel.

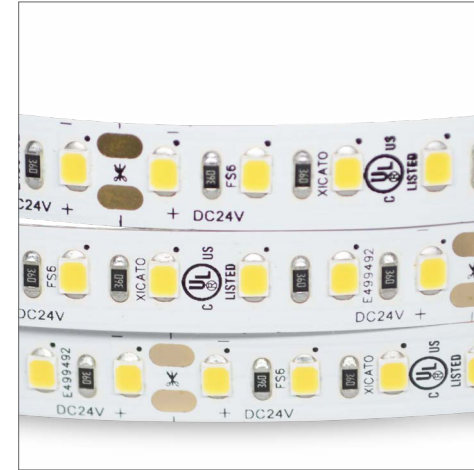
CCTs: 2200-4100
 Lumens: 220-1720/m, 67-526/ft
 Wattages: 1, 3, 4.4, 5, 6
 LEDs: 240/meter



High Density

Gold-plated, 95 CRI diffused light, no hot spots, also comes in ultra slim 4mm version.

CCTs: 2200-4200
 Lumens: 585-1560/m, 188-476/ft
 Wattages: 3, 4.4, 5, 6.6
 LEDs: 700/meter



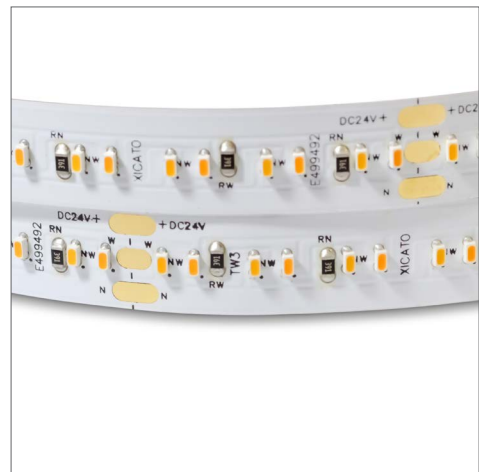
Full Spectrum

Delivers the full spectrum of light to closely match natural light for a healthy experience.

CCTs: 4000, 5000, 5700
 Lumens: 750-1330/m, 228-405/ft
 Wattages: 3, 4.4, 5, 6
 LEDs: 120/meter



XFL XICATO FLEXIBLE LINEAR



Side Emitting

Light is projected at a 90° angle allowing for hard to light spaces and wall grazing applications.

CCTs: 2700, 3000, 3500
 Lumens: 660-680/m, 200-210/ft
 Wattages: 3.0
 LEDs: 120/meter

Ultra Slim

Ultra narrow 4mm high-density profile with excellent light output on its own or in a channel.

CCTs: 2200-5000
 Lumens: 740-855/m, 225-260/ft
 Wattages: 3.7
 LEDs: 238/meter

Tunable White

CCT tunable linear lighting with advanced on-board circuitry for a 2-channel driver. New CCT range to 6500 coming soon.

CCTs: 2200-3000, 2400-3500
 Lumens: 650-1220/m, 200-373/ft
 Wattages: 3, 4.4, 5.2, 6
 LEDs: 240/meter



XFL supply: bluebottle
 Lighting Design: Benjamin Cisterne Design
 Architectural Design: Nazia Kachwalla - Tonkin Zulaikha Architects

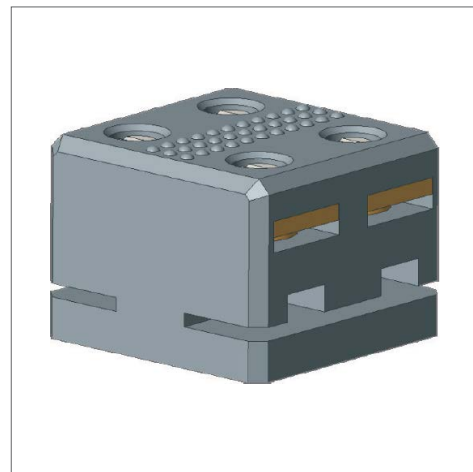
XFL XICATO FLEXIBLE LINEAR



Dim to Warm

Popular dim to warm linear lighting for bright and candlelight lighting with an all-in-one unique design.

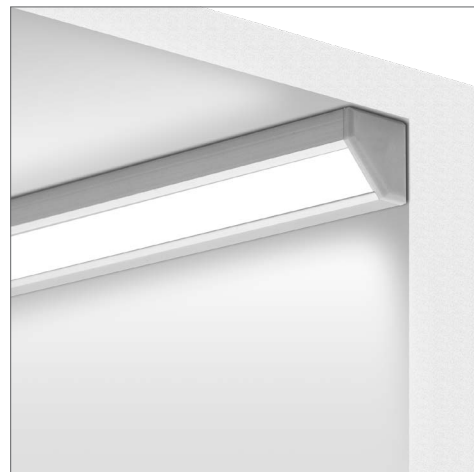
[Available Soon](#)



Linear Accessories

Choose from a variety of connectors, boot (standard hole or no hole) and mounting accessories.

[Datasheet on xicato.com](#)



Custom Cut

XFL is also available as a factory finished custom fixture or custom cut to your specified length and lead wire.

quotes@xicato.com

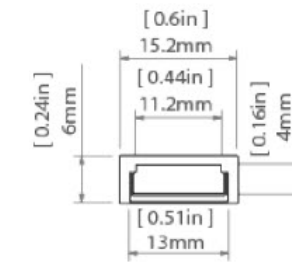


XICATO CHANNEL COLLECTION



XCC XICATO CHANNEL COLLECTION

Most channels can be customized as a wet location fixture by using waterproof sealant/silicone.



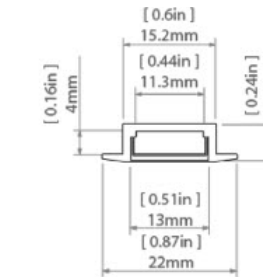
Standard Slim

Small dimensions (just 6mm/0.25" high), extrusion can fit slim designs and thin furniture pieces. Lightweight, easily disperses heat. Internal and external bending radius of 150mm.

XCC-C-SLM

NA BK WT

W Closet 22 67



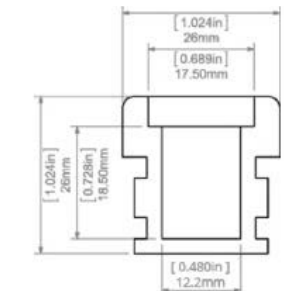
Standard Micro Recessed

Slim design with narrow collar enables unaesthetic grooves for easy assembly. Recessed shallow housing masks the edges of the groove, fits in 0.47"/12mm thick drywall.

XCC-C-MRC

SA BK

W Closet 22 67



Standard In-Ground

High load bearing capacity ideal for high-traffic areas such as sidewalks, bike paths, driveways. Environmentally friendly with special frosted cover.

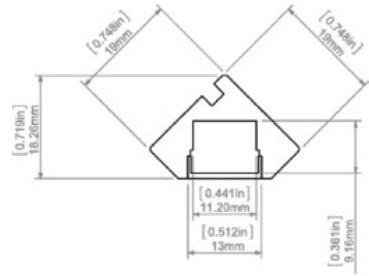
XCC-C-GND

NA

22 67

XCC XICATO CHANNEL COLLECTION

Most channels can be customized as a wet location fixture by using waterproof sealant/silicone.

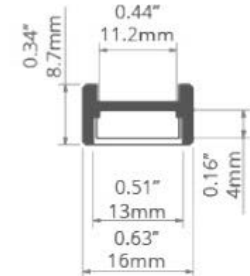
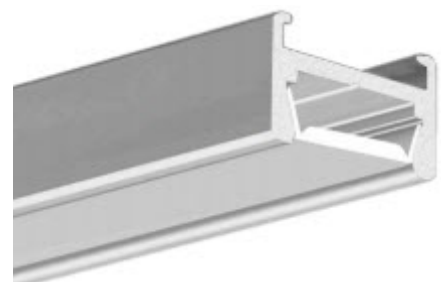


Standard 45

Provides 45° illumination for interior of cabinets, shelving and more. Smooth sides that creates a line of light.

XCC-S-45

SA

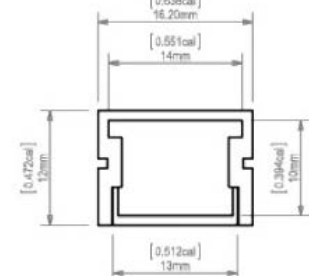


Standard Micro Square

Intended for small linear lighting fixtures with concealed mounting bracket. Easy snap-in assembly.

XCC-C-MSQ

SA

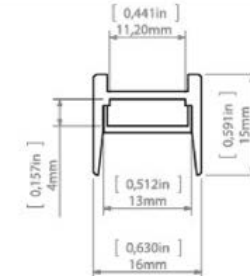
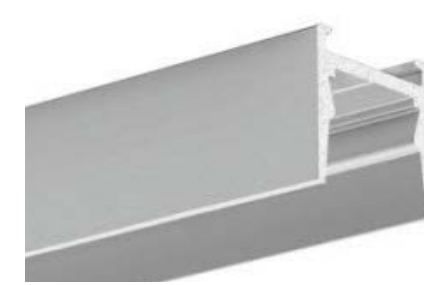


Standard Square 12

Designed for the construction of indoor lighting fixtures with increased ingress protection. Can be bent in the plane adjacent to the LED strip with internal bending radius 180mm and external bending radius 200mm.

XCC-C-SS12

SA

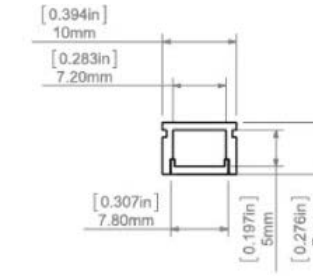


Standard Square 15

Allows the use of efficient, transparent covers while eliminating glare. Offers narrow beam angle. Good for backlighting, interior architecture and furniture.

XCC-C-SS15

SA BK

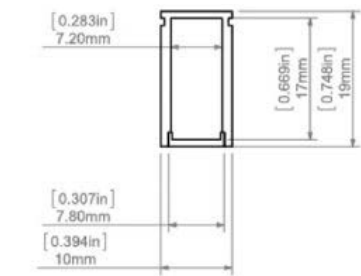
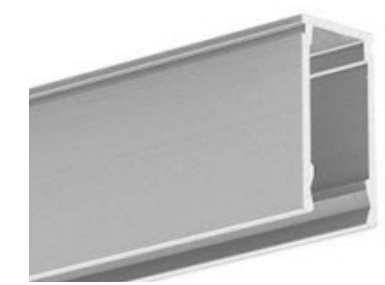
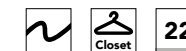


Ultra Slim Square

Small and square profile of 7mm for those hard to light applications. Bendable into gentle curves at the plane adjacent to the LED strip with 150mm bending radius.

XCC-C-USS

SA



Ultra Slim Rectangle

Smallest extrusion for a single narrow line of light for interior design, furniture and exhibitions. Mounted with two-sided adhesive.

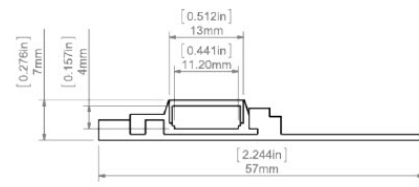
XCC-C-USR

SA



XCC XICATO CHANNEL COLLECTION

Most channels can be customized as a wet location fixture by using waterproof sealant/silicone.

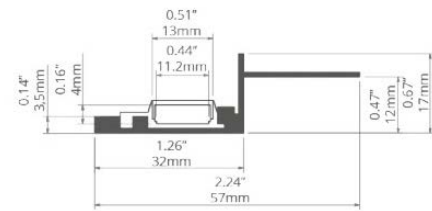


Cove Slim

Set of two profiles designed for recessed illumination with a slim profile. Mounting strip and separate extrusion recessed inside for parallel light direction.

XCC-C-CSL

NA

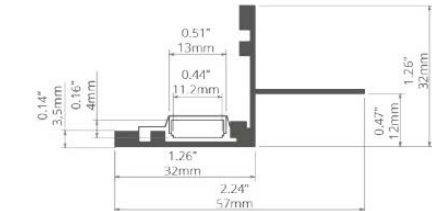


Cove Recessed 17

Set of two extrusions designed for recess illumination for ambient lighting of architectural niches located a short distance from the wall.

XCC-C-R17

NA

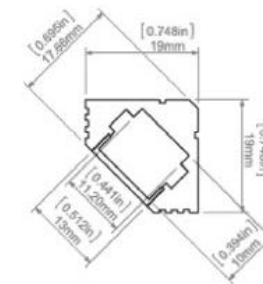


Cove Recessed 32

Cove lighting system consisting of the mounting base and extrusion enabling parallel and perpendicular direction of light against a wall. Illumination of niches.

XCC-C-R32

NA

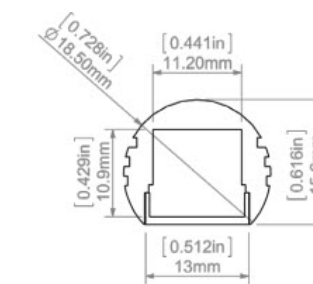
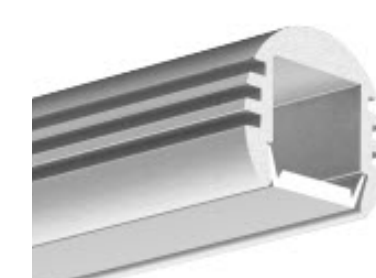
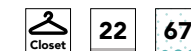


Designer 45

Designed for mounting on surfaces with internal 90° corners that directs light at 45° angle.

XCC-C-D45

SA BK WT

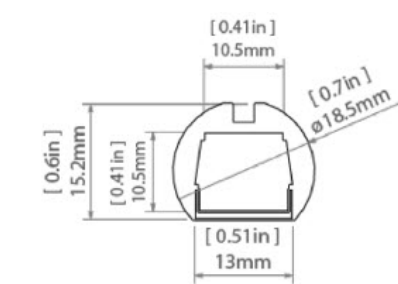
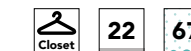


Designer Round

Round extrusion with 18.5mm circumference for construction of linear suspended lighting fixtures.

XCC-C-RND

SA



Designer Round Smooth

A modern smooth finish circular extrusion that can be easily designed as a finished lighting fixture.

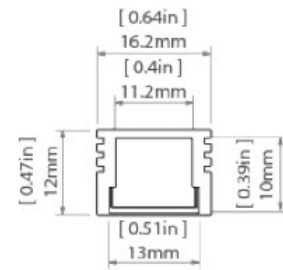
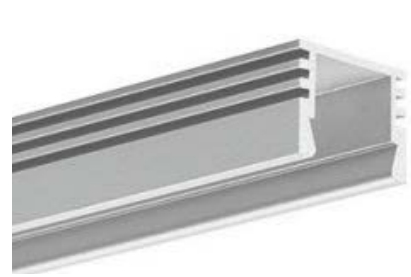
XCC-C-RSM

SA



XCC XICATO CHANNEL COLLECTION

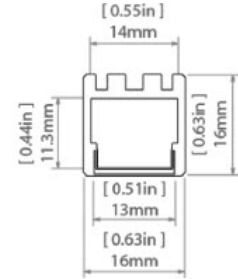
Most channels can be customized as a wet location fixture by using waterproof sealant/silicone.



Designer Square 12

Small 12mm height that offers flexibility for those hard to light applications. Easily embedded in narrow grooves or for backlighting luminaries.

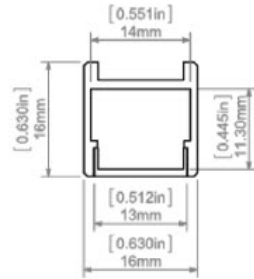
XCC-C-DS12



Designer Square 16

16mm extrusion with smooth side surfaces equipped with a small lock for system fasteners and extrusion connectors.

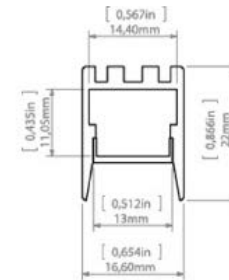
XCC-C-DS16



Designer Square Conceal 16

Similar design as the Designer Square 16 profile with a concealed mounting bracket. Clean shape, not distorted by technical detail, such as an external mounting bracket.

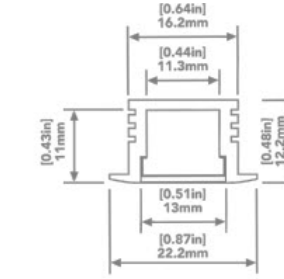
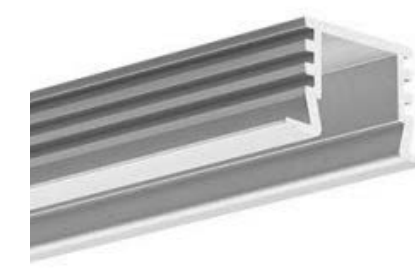
XCC-C-CS16



Designer Conceal 22

Profile of 22mm height for narrow light angle hiding the light source. The recessed cover minimizes the glare. Width of 14.4mm is compatible with most IP67 lighting.

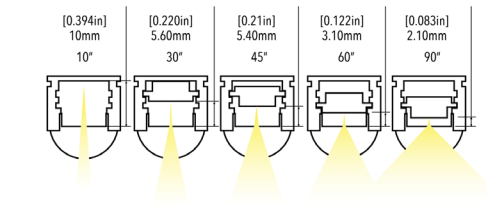
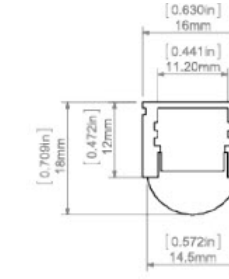
XCC-C-C22



Designer Recessed

Recessed with width of 11.3mm and height of 12.2mm with a lip for a smooth line that disappears.

XCC-C-REC



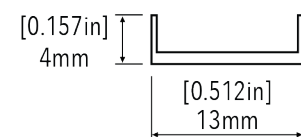
Specialty Focus

Movable insert enables five different lighting angles depending on the application. Beam angles - 10, 30, 45, 60 and 90 degrees.

XCC-C-SPF



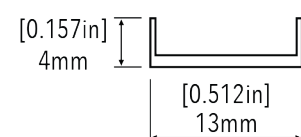
CHANNEL LENS & COVER



Universal Clear & Frosted

Basic 13mm wide and 4mm in height lens that is compatible with most of Xicato's channels, not UV resistant so best for indoor applications.

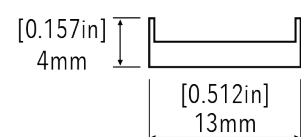
XCC-L-UNV-CL
XCC-L-UNV-FR



Universal Clear & Frosted - Pro

Easy snap-in lens allows for simplified field installation measuring 13mm wide and 4mm in height. Increased UV resistant with 80% light transmission in the frosted version.

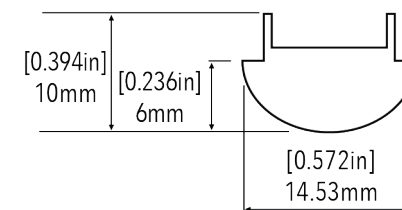
XCC-L-PRO-CL
XCC-L-PRO-FR



Extreme Clear & Frosted

13mm wide and 4mm in height, these rigid covers are durable under extreme climate conditions. Double-sided UV protection withstanding temperatures of up to 248F. The frosted lens has 70% light transmission.

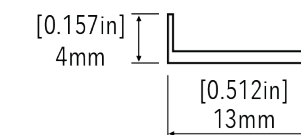
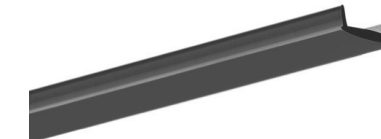
XCC-L-EX-CL
XCC-L-EX-FR



Focusing Lens

Semi-transparent satin lens offers homogenous line of light for focused lighting applications. Benefits include high transparency, quality and uniform cross-section. 14.53mm wide by 6mm in height.

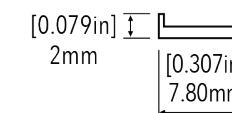
XCC-L-SPF-CL



Black Transition Lens

Matte black surface that turns white when the light is turned on. The cover is made of UV-resistant PC measuring 13mm wide and 4mm in height. When the LEDs are off, the cover is black. The best visual effect is obtained in profiles that are black inside.

XCC-L-TL-BK

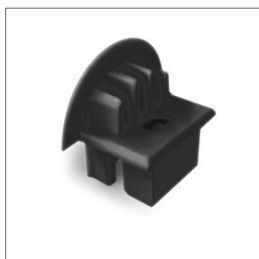
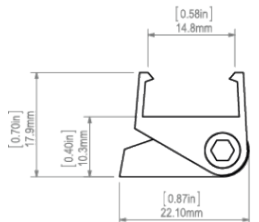
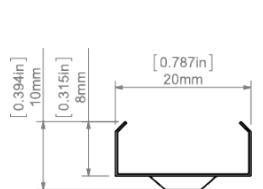
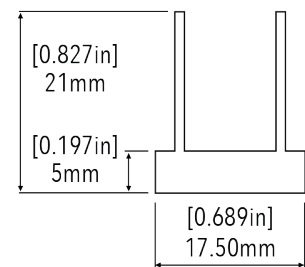


Ultra Slim Frosted

Narrow cover that is compatible with the Ultra Slim Square and Ultra Slim Rectangle channels. UV resistant with good light diffusion.

XCC-L-US-FR

CHANNEL LENS & COVER



In-Ground Frosted

Sturdy lens that easily adapts to the In-Ground channel to seal the fixture. Lens has good fire and mechanical resistance with complete UV protection.

XCC-L-GND-FR

End Caps and Mounting

Xicato has a wide range of end caps (with hole and without) and mounting options available. Please download the XCC data sheet for compatible lens, end caps and mounting accessories.

[Visit xicato.com/support](http://xicato.com/support) for details on XFL accessories





XICATO SMART CONTROLS

A Complete Solution Under One Roof: HARDWARE, SOFTWARE & SERVICES

Xicato's Smart Bluetooth® Controls are integrated with a wide array of luminaires, building management systems and other 3rd party applications. They deliver cost savings from installation through operation, and provide scene-setting capabilities that are second to none.

Our scalable, smart, and wireless controls are designed to provide the ultimate in control and monitoring. Tens of thousands of nodes can share a single, highly secure network, joined with tens of thousands of other networks, all while being installed and commissioned in just hours/days. Powerful features such as groups, scenes, schedules, and sensor control are easily within reach without expensive wires, hubs or dedicated control gear. You now have fully automated lighting that delivers flexibility, reliability and savings.

SMART CONTROLS SYSTEM



Xicato Intelligent Gateway **XIG**

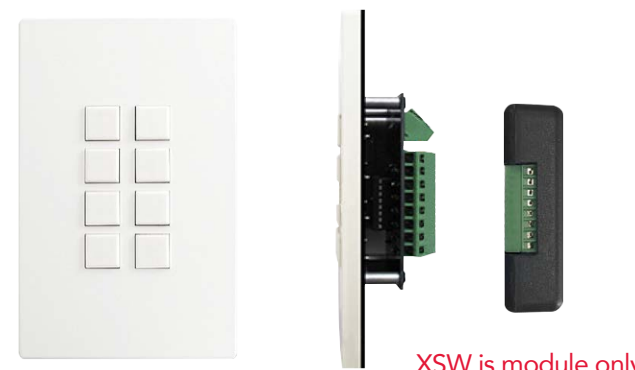
Provides wired or wireless IP access to a wireless Bluetooth network of XIM LED modules, sensors, and other devices. Securely monitor and control an unlimited number of BLE devices over any geographic distance, using any internet browser. Monitor temperature, intensity, power consumption, input voltage, and total operating hours. Control individual lights or lighting groups and pre-programmed scenes.



Xicato Intelligent Sensor **XIS**

These are compact, wireless nodes that transmit sensor data over the BLE network for use by lighting, environmental management, or other applications. XIS can sense motion, ambient light, temperature, and relative humidity.

XIS communicates directly with light sources that use Xicato's XID driver. Control intelligence including sensor response is built into the XIM and XID nodes, which can respond individually to one or more sensors, switches, local mobile or remote BMS commands, or even to other lights.



XSW is module only

Xicato Smart Switch **XSW**

XSW is a programmable switch that can be field installed and converts a standard 0-10V dimming switch or low voltage momentary contact switch into a sophisticated Bluetooth controller. Enables a standard single-channel, 0-10V dimming switch to control a single, dimmable light source or lighting group via Bluetooth. XSW broadcasts data directly to lighting nodes using Bluetooth - no central controller, gateway, hub or extra hops required. This means instant response and maximum reliability using minimum power. XSW is compatible with many standard switches on the market today.



Xicato Relay Nodes **XRN**

Xicato Relay Nodes are compact, DC-powered, wireless Bluetooth nodes that allow users to extend the reach of Bluetooth networks used for lighting control, environmental monitoring, or other building management applications. Now integrators and users can extend their control of their Bluetooth network into hard to reach places, remote corners, or across enormous spaces without additional expensive or complex pieces of equipment.

SMART CONTROLS SYSTEM



Intelligent Driver XID

XID are compact, deep-dimming constant current drivers that enable Bluetooth and/or wired control of most indoor LED light sources with a warranty of 5-years. Their small size and circular form factor make them particularly well suited for track, spot, and down light applications as well as an excellent choice for linear luminaires such as troffers. Xicato's XID accepts either 24V or 48V DC input and provides smooth, IEEE 1789-compliant dimming performance to 0.1%, programmable with beacons, and provides detailed operating data over Bluetooth.

Key Features & Benefits

XID can be programmed by the luminaire manufacturer or distributor using the Xicato Configuration Tool

Deep, smooth dimming to 0.1% with flicker-free performance

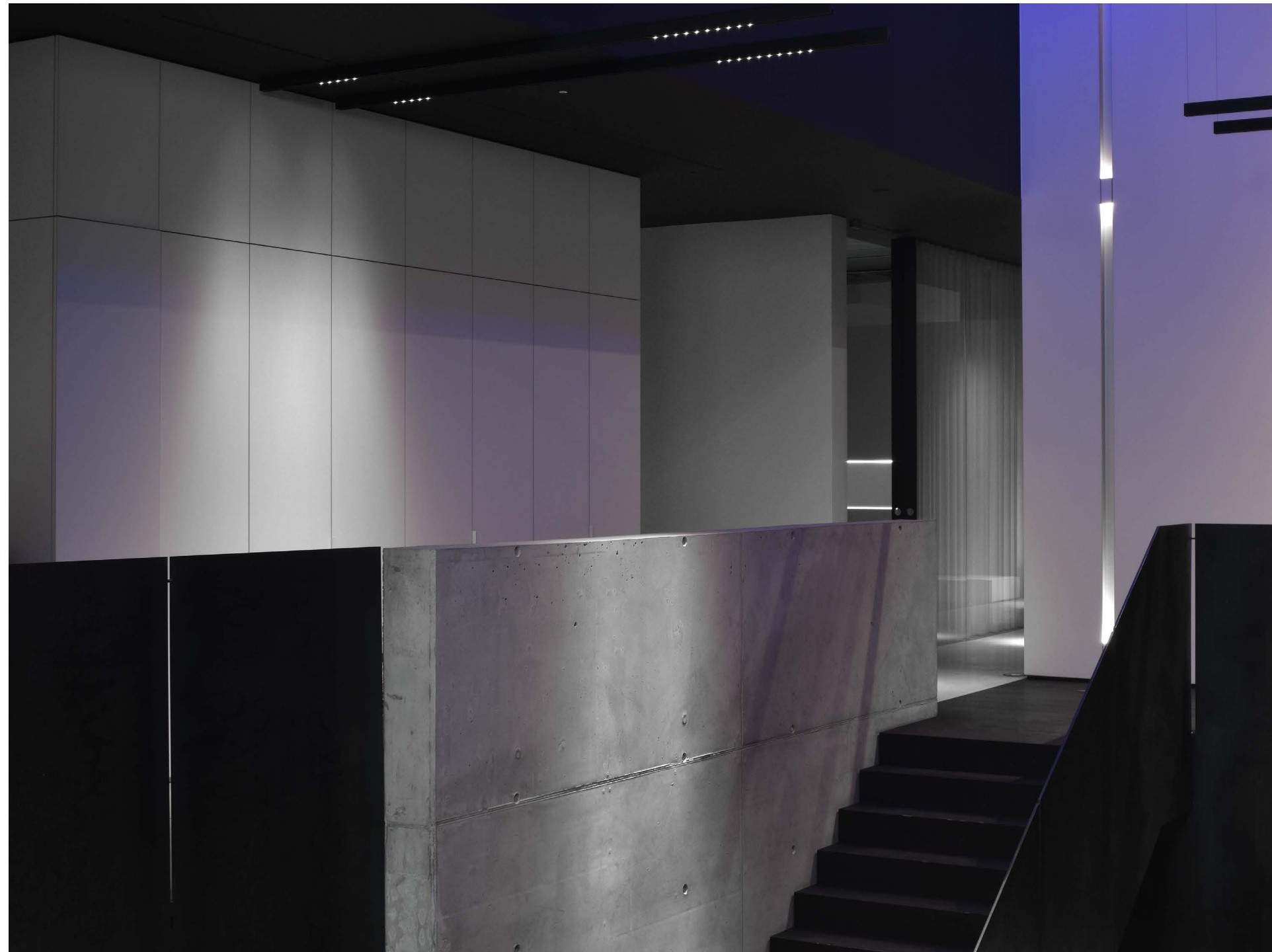
Accepts 24V or 48V DC input

Controls LED arrays with voltages from 2.5V up to 45V

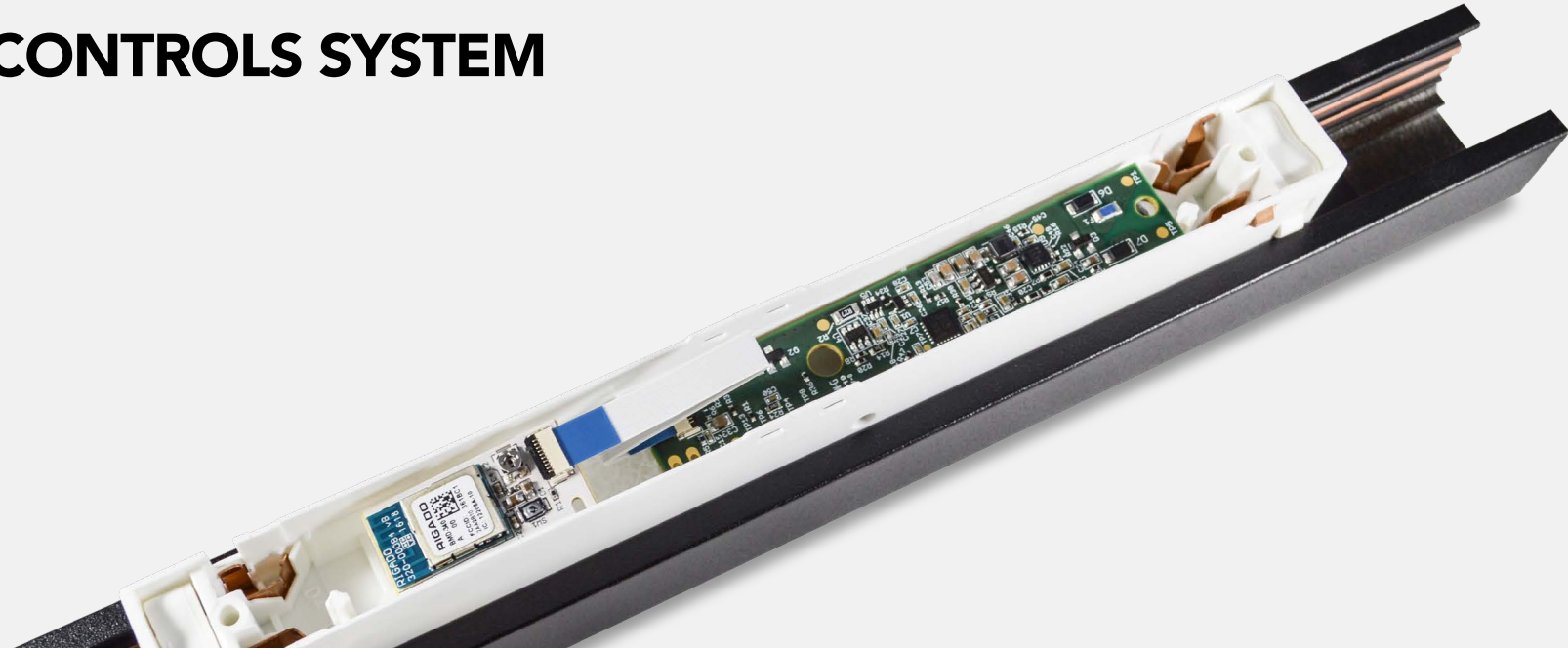
Contains sensors that detect temperature of the electronics

Output currents: 350mA, 700mA, 1400mA at 13W, 25W and 50W - other currents available down to 175mA with XCT programming tool

5-year warranty



SMART CONTROLS SYSTEM



Minature Driver **XMD**

XMD was created to fit into compact track adapters for a finished elegant design. With its narrow, rectangular and low-profile footprint, this form factor enables fixture designs to completely hide the driver. The XMD is capable of deep 0.1% flicker-free dimming and smart driver control with wireless BLE option. These constant drivers are also available with Bluetooth SIG mesh for intelligent wireless lighting control.

Key Features & Benefits

DC driver is specifically designed to fit into a highly space-constrained environment

Maximum current output factory limited using Xicato Configuration Tool to 50% and 100% of rated maximum

IEEE 1789-compliant dimming to 0.1% with Bluetooth wireless control

Controls LED arrays with voltages from 2.5V up to 45V

Stores a histogram of intensity settings and temperature for the life of the device

Output currents: 350mA, 700mA, 1050mA at wattages 15W, 30W and 45W - other currents down to 175mA with XCT programming tool

5-year warranty



London Science Museum, Kris Humphreys Photography

MEANWELL DRIVERS



OWA

OWA Series works like an adapter as a single-output external LED power supplies that simplifies the connection with LED lighting fixtures without extra wiring efforts. Class 2, universal AC input, UL listed.

XLD-ND-MW-OWA-60U-24-P1M
XLD-ND-MW-OWA-90U-24-P1M



PWM

Dimmable AC/DC LED driver featuring the constant voltage mode with PWM style output maintaining brightness when driving linear lighting. Option with DALI control technology.

XLD-D010-MW-PWM-60-24
XLD-D010-MW-PWM-90-24
XLD-DALI-MW-PWM-90-24-DA



LPV

Series of single output switching power supplies with constant voltage design. Universal AC input with fully encapsulated case for IP67 applications.

XLD-ND-MW-LPV-100-24
XLD-ND-MW-LPV-60-24

AVAILABLE SOON



RGBW

Combines both alternating color changing LEDs and single white light in one. XFL RGBW gives you absolute control over any environment.



TUNABLE WHITE

Tunable white lighting offers a wider spread of warm and white lighting to choose from in one single light application. CCT range is 2700 to 6500.



NEON

LED neon lighting simulates the look of glass neon yet its modern design is flexible and easy to install. Available in white CCTs and RGBW.



Xicato AC Drivers

XAD offers guaranteed reliability of a 10-year warranty combined with Xicato's patented technology for smooth, flicker-free dimming to 0.1% and network-ready compatibilities.

ONLINE PRODUCT SELECTOR

BUILD YOUR CUSTOMIZED LIST OF COMPATIBLE PRODUCTS
USING THIS ONLINE PRODUCT SELECTOR TOOL



IF YOU DON'T NEED A CHANNEL, SKIP TO XLA – LINEAR ACCESSORIES

STEP 1 CHOOSE LINEAR

Select the type of linear lighting by CCT, wattage and spool length.

STEP 2 CHOOSE CHANNEL

Select the compatible channel, lens, end cap and mounting accessories.

STEP 3 CHOOSE DRIVER

Select the compatible driver for your LED project - OWA, PWM or LPV.

Product Selector can be found online at [xicato.com](https://www.xicato.com)

HOW TO ORDER

Submit purchase orders to orders@xicato.com

If you would like a quote for a lighting project or custom fixtures to match your exact specifications, email us at quotes@xicato.com or contact your local partner in your region found on [xicato.com/contact](https://www.xicato.com/contact).





Xicato Global Headquarters

102 Cooper Court
Los Gatos, CA 95032

Contact Us

Tel: +1 866 223 8395
info@xicato.com