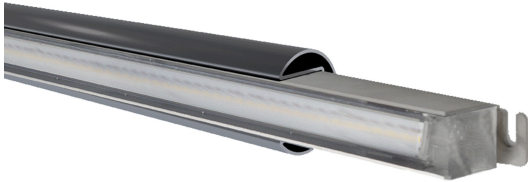


# OHR3

## OHR3 N27 1039 840X CL ASYM

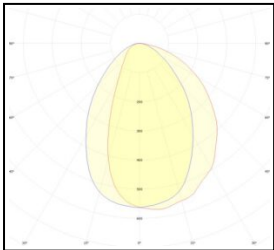
### Product features

The universal light insert made of V4A stainless steel enables highly efficient and contemporary illumination of traffic areas. The fully encapsulated LED light element can be integrated almost invisibly into handrail systems with 27 mm grooves and, thanks to its asymmetrical light characteristics, provides even light distribution with high light quality. Thanks to the tight LED arrangement with special diffuser optics, the light insert appears as a continuous line of light without visible LED points.



### Technical specifications

Luminous flux	Light color	performancerecording	Protection class
1170 lm	4000 K	18.6W	IP67, IP69, IP69K



<b>lifespan</b>	L80B10 60,000h @ 25 ° C
<b>Ambient temperature</b>	-20 ... + 45 ° C
<b>Storage &amp; transport temperature</b>	-25 ... + 70 ° C
<b>nominal voltage</b>	DC 28 V

<b>Housing material</b>	Stainless steel V4A
<b>Glow wire resistance</b>	650 ° C
<b>Protection class</b>	III
<b>Protection class</b>	IP67, IP69, IP69K
<b>Impact resistance</b>	IK10
<b>Connection type</b>	Crimp connector
<b>Color fidelity</b>	SDCM 3
<b>Colour reproduction</b>	typ. 85
<b>Installation dimensions length [mm]</b>	27

# OHR3

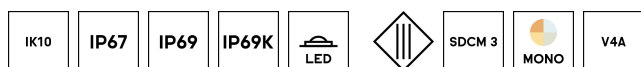
## OHR3 N27 1039 840X CL ASYM

Installation dimensions height [mm] 30






### Dimensions

Width (B)	Height (H)	Length (L)	Installation dimensions length	Installation dimensions height
27 mm	30 mm	1039mm	27 mm	30 mm

### Further product features



### Equipment

Order Code	Description	
	R SNT ELI 0-90W IP66	
	Constant voltage power pack for supplying LED lamps and LED lines with DC 28 V. The power pack is ideal for operating LEDLUX LN, LEDLUX LS or LEDLUX LX light lines with an LED output of up to 20W.	
	This power supply is suitable for the switchable operation of voltage-controlled LED modules. With an output voltage of 30 V, it is able to generate an output power of 150 W. Thanks to its compact and dense design, it can be ideally installed in different application scenarios and meets the requirements for the IP67 degree of protection.	
	This power supply unit is suitable for the switchable operation of voltage-controlled LED modules. With an output voltage of 28 V, it is able to generate an output power of 15 W. By installing the power supply in a box suitable for outdoor use, it can be ideally installed in different application scenarios and meets the requirements for the IP66 degree of protection.	
	Dimming box for dimming constant voltage operated LED modules.	

# OHR3

## OHR3 N27 1039 840X CL ASYM

Strain relief for Dimmbox 28105100.



---

### Additional Information

[www.instalighting.de](http://www.instalighting.de)