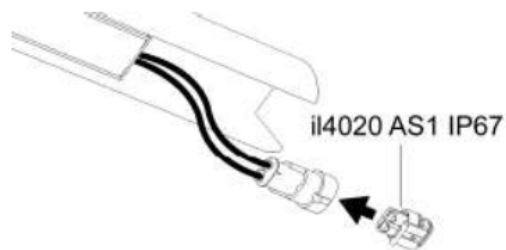
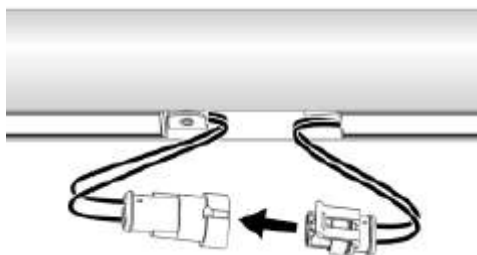
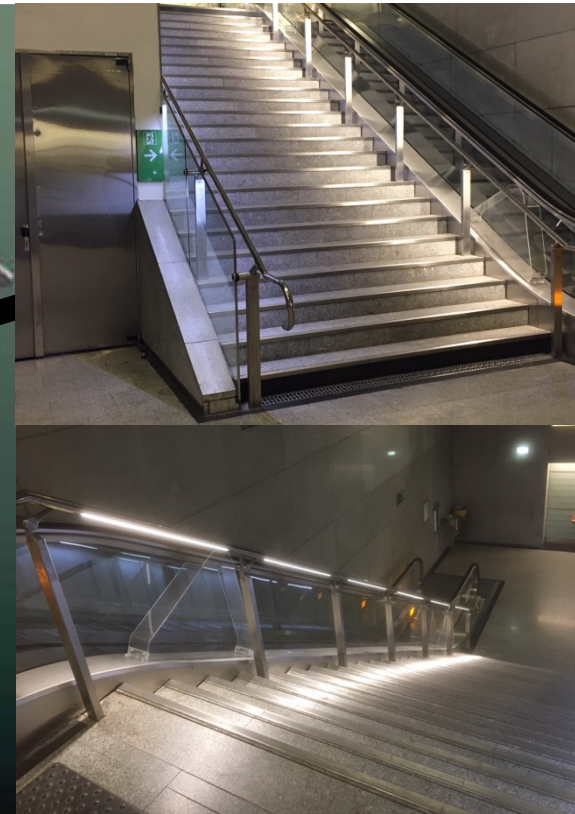


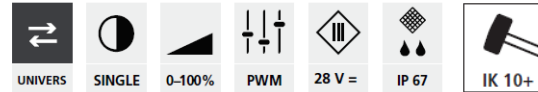
# Instalight 4020 LS asymmetric Handrail-Luminaire

# INSTA



|      |  |         |            |            |            |      |
|------|--|---------|------------|------------|------------|------|
| IP67 |  | <br>LED | <br>SDCM 3 | <br>0-100% | <br>IK 10+ | 316L |
|------|--|---------|------------|------------|------------|------|

## instalight 4020 LS – Single-colour light insert



# INSTA

### Application

The instalight 4020 was developed for use in the standard grooved tubes of handrails. Its small cross-section dimensions and its extremely robust structure means that it is gaining in importance in similar applications.

The high-intensity LS variants make lighting solutions possible out of the handrail. Of course, there are additional variants available in RGB or single-colour light.

### Product characteristics

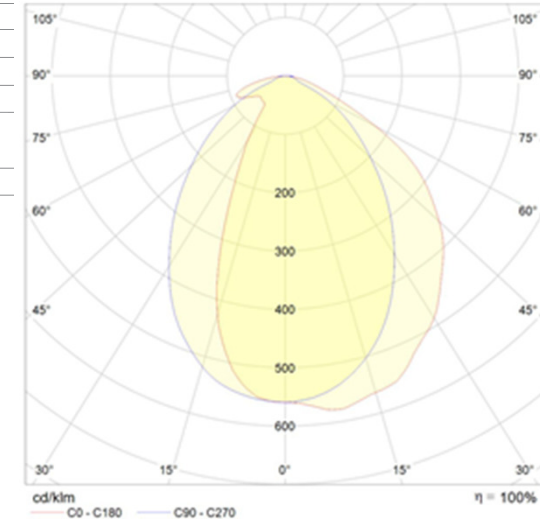
- Asymmetrical light-distribution ideally for lighting stairs
- High-quality stainless steel housing with clear full encapsulation
- Protection rating IP 67
- Suitable for handrail profiles with grooved tube in  $d = 48.3$  mm and  $60.3$  mm
- Impact-resistant and robust

### Control

- DC 28 V via external power supply unit

### Technical data of the LED lamp insert

|                        |                   |
|------------------------|-------------------|
| Rated voltage          | DC 28 V SELV      |
| Power consumption      | 19 Watt per meter |
| Safety class           | III               |
| Protection rating      | IP 67             |
| Dimensions (L x W x H) | see below         |
| Material               | stainless steel   |
| Weight                 | 1.6 kg / m        |



Wide beam asymetry optimised for stairs and walkways for homogenous light.

## instalight 4020 LS – Variants

|                       | Dimensions (mm) | L    | W  | H  | Optics | LDC | typ. light colour | typ. $\Phi$  | R <sub>a</sub> | Art.-no.  |              |     |   |
|-----------------------|-----------------|------|----|----|--------|-----|-------------------|--------------|----------------|---|--------------|-----|---|
| <b>luminaire long</b> |                 |      |    |    |        |     |                   |              |                |   |              |     |   |
|                       |                 | 389  | 27 | 30 |        |     | WWH<br>3000 K     | 1030<br>lm/m | >80            | il 4020 LS xxxxWWH K1500<br>xxxx= insert the length |              |     |   |
|                       |                 | 714  |    |    |        |     |                   |              |                | NWH<br>4000 K                                       | 1030<br>lm/m | >80 | il 4020 LS xxxxNWH K1500<br>xxxx= insert the length |
|                       |                 | 1039 |    |    |        |     |                   |              |                |   |              |     | TWH<br>6500 K                                       |
| 1364                  |                 |      |    |    |        |     |                   |              |                |   |              |     |   |

## Instalight 4020 LS asymmetric Handrail-Luminaire

INSTA

### Special features of the luminaire:

Serial product in use since 2008, long-time experience is very good. Product is listed for Deutsche Bahn and in use at many public transport stations.

Housing from refined steel 316L, international 1.4301, resistant against corrosion, mechanical forces and vandalism. Optimal thermal transmission to ambient.

Profile inside from Polycarbonat, UV stabilized and long time stabil >10 years.

Casting resin multicomponent Polyurethan, in use since 2006 for outdoors.

Glow-wire test passed with 750°C for Deutsche Bahn requirements.

LEDs are single ensured with by-passing Diodes so that later single LED failures cannot cause a complete failure of a segment of PCB.

Optic with harmonising effect, single dark LEDs would not be visible.