

DimWheel Colour Faceplate Kit With Lightpipe

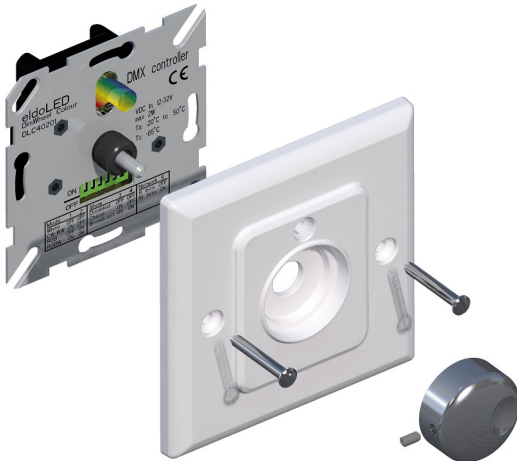
DimWheel Faceplate

The DimWheel Colour is compatible with most standard faceplates on the market. For markets that use UK-style electrical wall mounting boxes (BS4662 standard), a faceplate kit is available with an innovative lightpipe assembly, which provides visual feedback of the output colour in RGB(W) installations. The faceplate kit fits directly onto the eldoLED DimWheel Colour and is simple to install.

The kit features a white plastic faceplate with screw fixings to the wall box and a sculptured aluminum control dial to operate the DimWheel's push and turn functions. Use a 1.5 Allen key to fasten the control dial to the DimWheel's rotary encoder, and two M3.5 x 25mm screws to fasten faceplate and DimWheel to the wallbox.

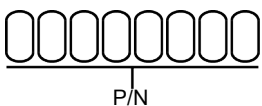
Product offering

DimWheel Colour and DimWheel faceplate: a perfect kit



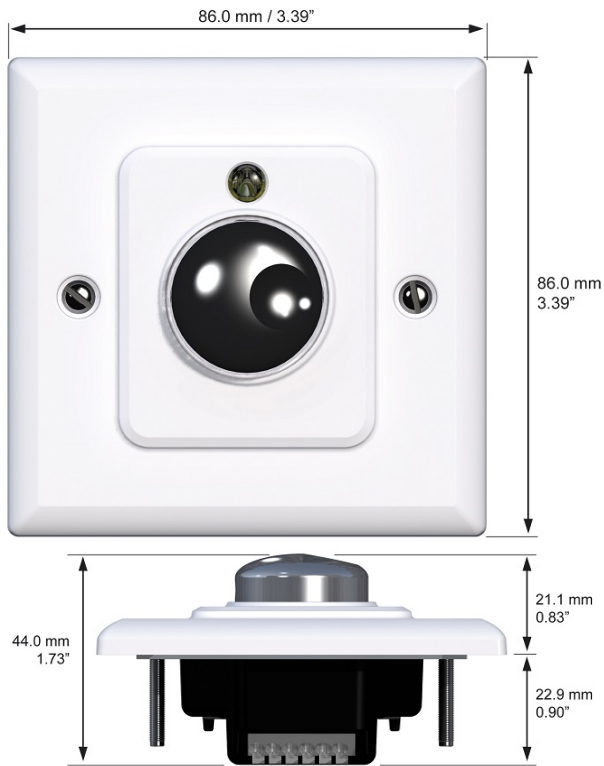
Product name	Faceplate UK white
Part number (P/N)	DLA101W1
Product description	DimWheel faceplate kit, colour: white

Order number configurator



P/N	Part number of product
-----	------------------------

Mechanical details



Warranty

Warranty period

[General Terms and Conditions](#)

Europe, Rest of World

eldoLED B.V.
Science Park Eindhoven 5125
5692 ED Son
The Netherlands

E: info@eldoled.com
W: www.eldoled.com

North America

eldoLED America
One Lithonia Way
Conyers, GA 30012
USA

E: info@eldoled.com
W: www.eldoled.com
