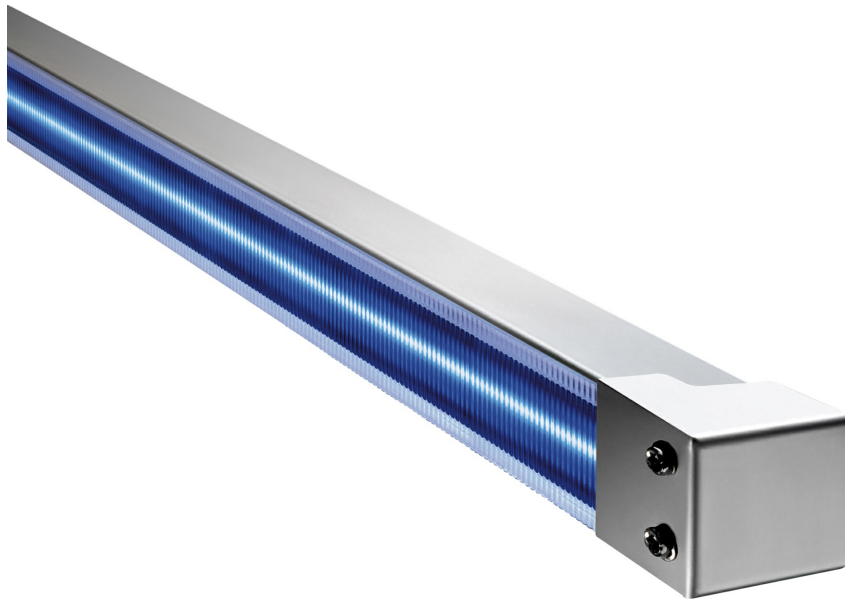


instalight 4010 LX

Light line system indoor/outdoor RGB, RGBW, TW



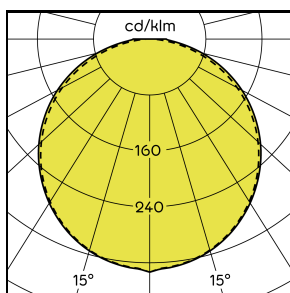
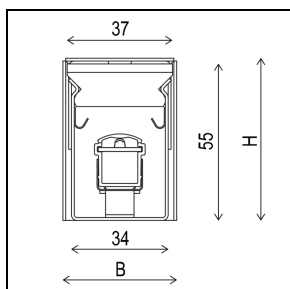
The light line system serves as an ideal tool for effective building accentuation. Reduced to a minimum of material in mechanical terms, the LED light line supports the architectural building character but, when switched off, recedes almost invisibly into the background.

Main Features

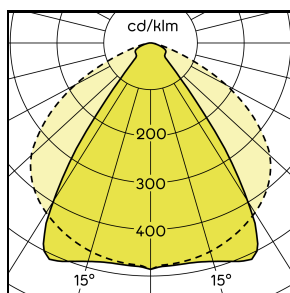
- > Modular component system guarantees maximum design flexibility and scalability in the object
- > Exchangeable acrylic covers for variable light effect
- > Minimally visible housing parts make the luminaire inconspicuous in daylight
- > Weatherproof and UV-resistant materials guarantee color stability for the entire service life
- > Revisable and upgradeable LED technology
- > Various light inserts ensure flexibility in the application
- > V2A stainless-steel housing for durable operation in an extreme environment



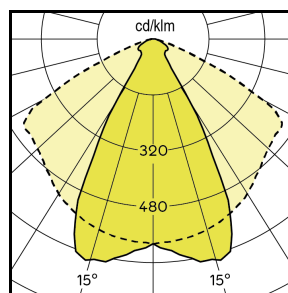
Product Variations



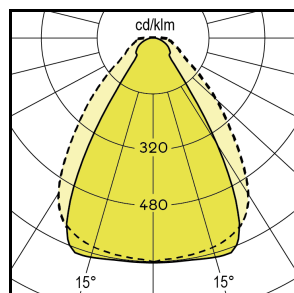
120°



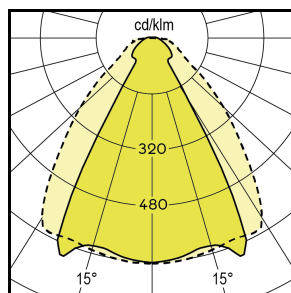
CLEAR, 1015 LM/M



CLEAR, RGB



MICRO LINE, 845 LM/M



MICRO LINE, RGB

	P	Optics	Optics dir.	Max. lumin. flux	Light colour
il 4010 LX RGB CL	16 W/m	Clear	60°	102 lm	RGB
il 4010 LX RGB ML	16 W/m	Micro Line	60°	72 lm	RGB
il 4010 LX RGB TL	16 W/m	Satined	120°	64 lm	RGB
il 4010 LX RGBW CL	16.2 W/m	Clear	60°	208 lm	RGBW
il 4010 LX RGBW ML	16.2 W/m	Micro Line	60°	173 lm	RGBW
il 4010 LX RGBW TL	16.2 W/m	Satined	120°	132 lm	RGBW
il 4010 LX TW CL	18.9 W/m	Clear	60°	1015 lm	2700 ... 6500 K
il 4010 LX TW ML	18.9 W/m	Micro Line	60°	845 lm	2700 ... 6500 K
il 4010 LX TW TL	18.9 W/m	Satined	120°	645 lm	2700 ... 6500 K

Specifications

Lifecycle Status	Active
Rated voltage	Depending on light use
Rated voltage DC	28 V SELV
Degree of protection	IP 64
Protection class	Depending on light use
Protection class	III
Dimensions	40 x 57 mm (WxH), variable length

Width (B)	40 mm
Height (H)	57 mm
Dimmable/Controllable	Yes
Interface	LEDTRIX
Material	Stainless steel
Weight	2.2 kg/m
Impact strength	IK10

Accessories



Supply unit 0-120 W / AM
58920027



SNT ELI 0-120 W
58916023



SNT ELI 0-57 W
58916030



instalight Control LEDTRIX Master
50913000



instalight Vario basic device
V2 GR 001



instalight Vario interface module LEDTRIX
V2 FM LX 001



SNT ELI 0-110 W / 30 V
50930074



DMX-LEDTRIX Gateway 2 channel, built-in
51688014