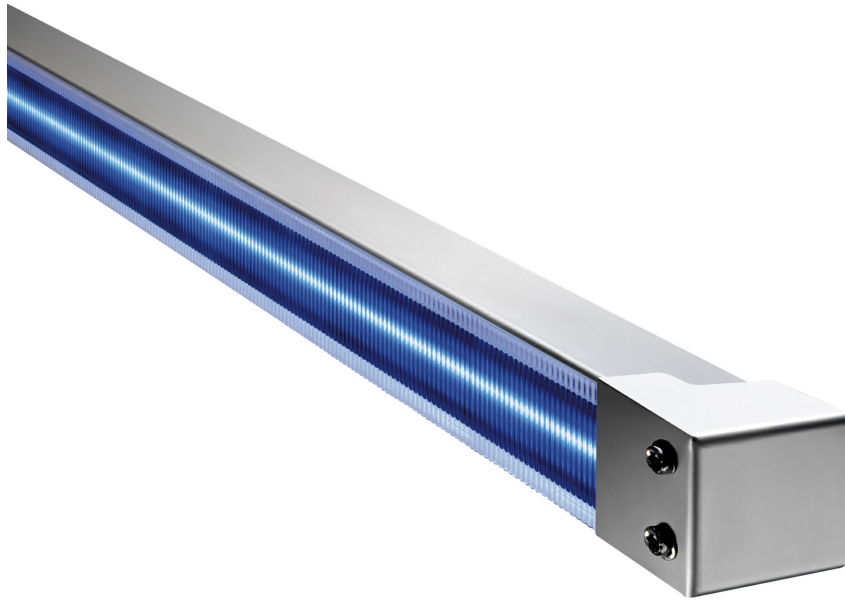


instalight 4010 LN/LS

## Light line system indoor/outdoor



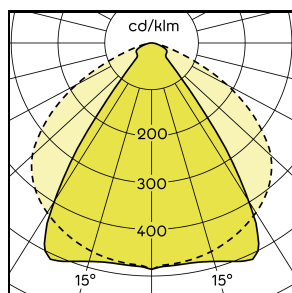
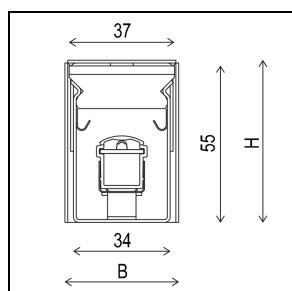
The light line system serves as an ideal tool for effective building accentuation. Reduced to a minimum of material in mechanical terms, the LED light line supports the architectural building character but, when switched off, recedes almost invisibly into the background.

### Main Features

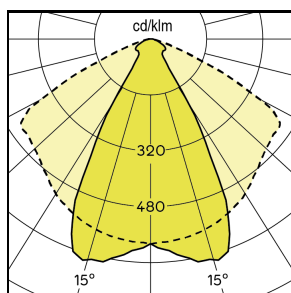
- > Modular component system guarantees maximum design flexibility and scalability in the object
- > Exchangeable acrylic covers for variable light effect
- > Minimally visible housing parts make the luminaire inconspicuous in daylight
- > Weatherproof and UV-resistant materials guarantee color stability for the entire service life
- > Revisable and upgradeable LED technology
- > Various light inserts ensure flexibility in the application
- > V2A stainless-steel housing for durable operation in an extreme environment
- > Light inserts instalight 4010 LS with the color temperature 4000 K are DB-listed



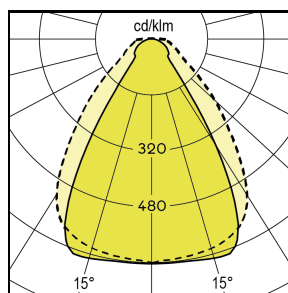
# Product Variations



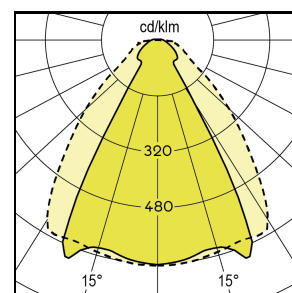
CLEAR, 1380 LM/M



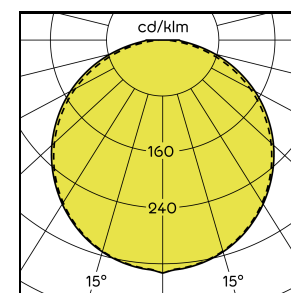
CLEAR, 490 LM/M



MICRO LINE, 1130 LM/M



MICRO LINE, 410 LM/M



SATINED, 120°

	P	Optics	Optics dir.	Max. lumin. flux
il 4010 LN CL	7.2 W/m	Clear	60°	490 lm
il 4010 LN ML	7.2 W/m	Micro Line	60°	410 lm
il 4010 LN TL	7.2 W/m	Satined	120°	310 lm
il 4010 LS CL	16 W/m	Clear	60°	1380 lm
il 4010 LS ML	16 W/m	Micro Line	60°	1130 lm
il 4010 LS TL	16 W/m	Satined	120°	870 lm

# Specifications

Lifecycle Status	Active	Height (H)	57 mm
Rated voltage DC	28 V SELV	Dimmable/Controllable	Yes
Protection class	III	Interface	Depending on the ballast used
Light colour	2700 K / 3000 K / 4000 K	Material	Stainless steel
Colour rendition Ra	85	Weight	2.2 kg/m
Width (B)	40 mm	Impact strength	IK10

# Accessories



**SNT ELI 0-110 W / 30 V**  
*50930074*



**Supply unit 0-120 W / AM**  
*58920027*



**SNT ELI 0-120 W**  
*58916023*



**SNT ELI 0-57 W**  
*58916030*



**SNT ELI 0-90W IP66**  
*DCV 090 30 IP66 2*



**Supply Unit 0-57 W IP66**  
*DCV 057 28 IP66 2*