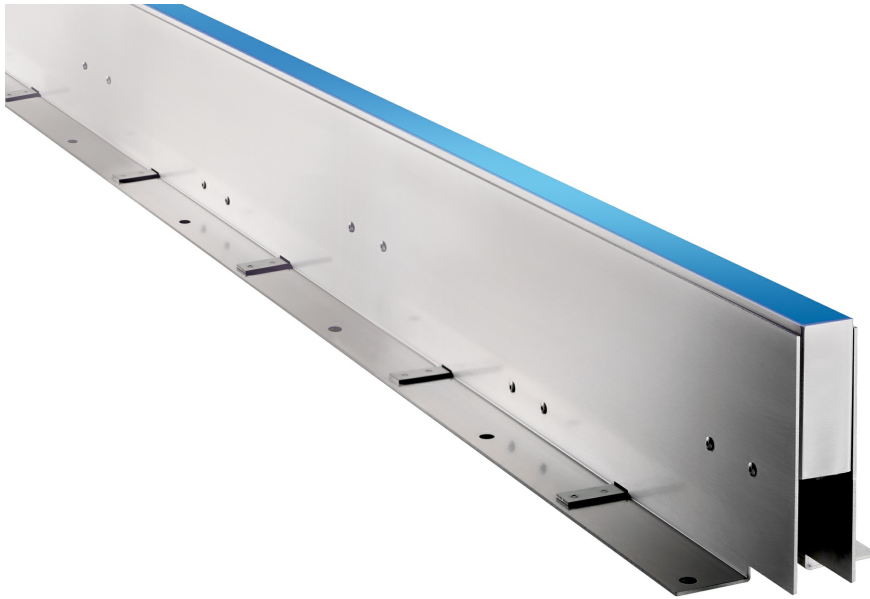


instalight 1060 LX RGB

Cast in-ground light line



The in-ground light line, made of V4A stainless steel, is much more than a simple orientation light. From the clear, monochrome line guide through to multimedia light installations with hundreds of colour-controllable segments, this luminaire can fulfil all kinds of requirements, anywhere in the world - on squares and paths, indoors and outdoors, above and below water.

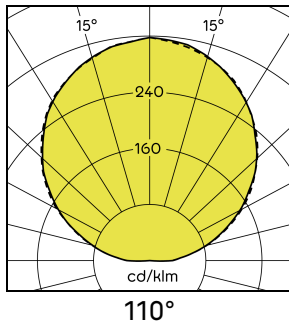
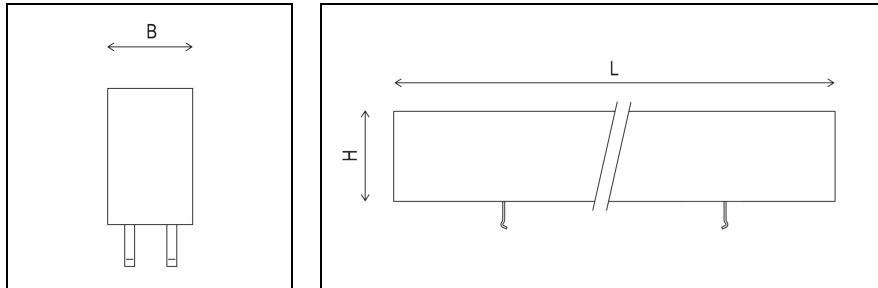
Main Features

- > Homogeneous light-emitting surface for aesthetic lighting effect
- > Minimally visible housing parts make the luminaire inconspicuous in daylight
- > Flush installation for perfect integration into the surroundings
- > Weatherproof and UV-resistant materials guarantee color stability for the entire service life
- > Extremely stable installation frame, can withstand wheeled vehicles
- > High quality look due to construction without screws in the visible area
- > Frameless housing ensures seamless transition to light-emitting surface
- > V4A stainless-steel housing for durable operation in an external environment
- > Maintenance-free and safe from vandalism thanks to impact-resistant full grouting
- > Snap-In-technology of the light inserts for fast assembly without tools
- > Ready to connect with system plug for quick and reliable installation
- > IP69: According to ISO 20653 (standard including cleaning with high-pressure hot vapour cleaner)
- > IP69K: According to EN DIN 40050-9 (standard including cleaning with high-pressure hot vapour cleaner)
- > Project-related special lengths on request





Product Variations



	P	Max. lumin. flux	Length (L)	Weight
il 1060 LX 344 RGB	5.4 W	40 lm	344 mm	1.4 kg
il 1060 LX 500 RGB	8.1 W	60 lm	500 mm	2 kg
il 1060 LX 1000 RGB	16.2 W	120 lm	1000 mm	4 kg

Specifications

Lifecycle Status	Active	Height (H)	70 mm
Rated voltage DC	DC 28 V SELV	Connection mode	ITT Cannon IP67
Protection luminaire	IP68, 2 m / IP69 / IP69K	Cable length	2 x 500 mm
Protection connector	IP67	Dimmable/Controllable	Yes
Efficiency class	A	Interface	LEDTRIX
Protection class	III	Housing colour	stainless steel
Optics	Satined	Housing material	Stainless steel (V4A)
Beam angle direct	110°	Cover material	Plastic
Light colour	RGB	Glow-wire testing	650 °C
Ambient temperature	-20 ... +45 °C	Weight	4 kg/m
Storage/transport temperature	-25 ... +60 °C	Impact strength	IK10
Service life (L80/B10)	60,000 h	Stat. pressure load	30 kN
Width (B)	29 mm	Ability to be traversed by vehicles	yes

Accessories



Mounting frame 1000 x 165
IL 1060 F 1000 X 165



Mounting frame 1000 x 125
IL 1060 F 1000 X 125



Mounting frame 1000 x 90
IL 1060 F 1000 X 90



Mounting frame 500 x 165
IL 1060 F 500 X 165



Mounting frame 500 x 125
IL 1060 F 500 X 125



Mounting frame 500 x 90
IL 1060 F 500 X 90



Mounting frame 344 x 165
IL 1060 F 344 X 165



Mounting frame 344 x 125
IL 1060 F 344 X 125



Mounting frame 344 x 90
IL 1060 F 344 X 90



Lifting tool il1060
IL 1060 ZM 01



Safety sleeve IP67
50900049



Adapter cable
58924050



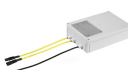
End plug
58926010



End socket
58926011



Adapter
IL ZL IP20 001



Supply unit 0-120 W / AM
58920027



SNT ELI 0-120 W
58916023



SNT ELI 0-110 W / 30 V
50930074



SNT ELI 0-57 W
58916030



instalight Control LEDTRIX Master
50913000



instalight Vario basic device
V2 GR 001



instalight Vario interface module LEDTRIX
V2 FM LX 001



DMX-LEDTRIX Gateway 2
channel, built-in
51688014