

**Colour
is our nature**

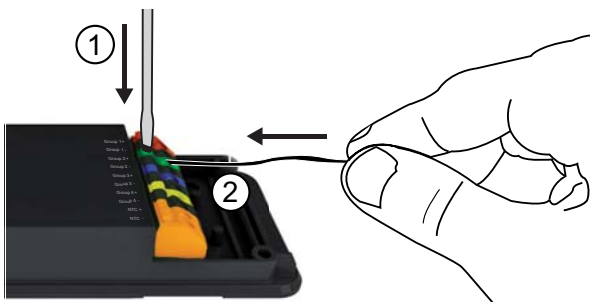
Connecting and configuring the POWERdrive 45D/90D/180D



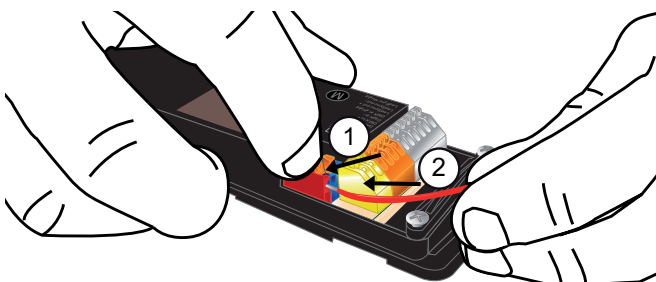
A Removing the cover



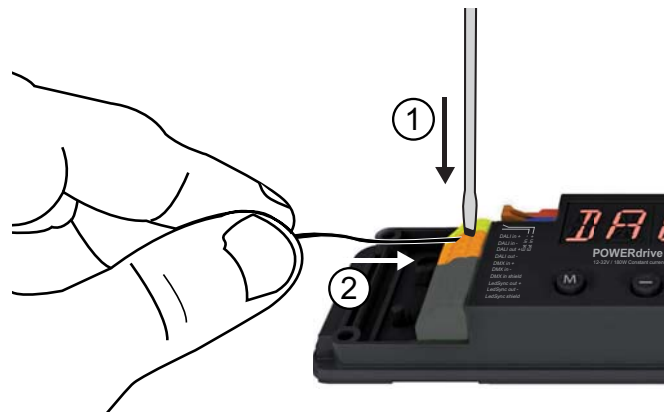
B Removing the strain reliefs



C Connecting LED wires



D Connecting power supply wires



E Optional: Connecting external control device or network cabling



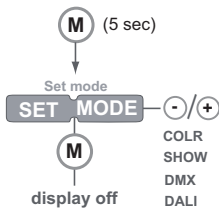
F Fastening the strain reliefs



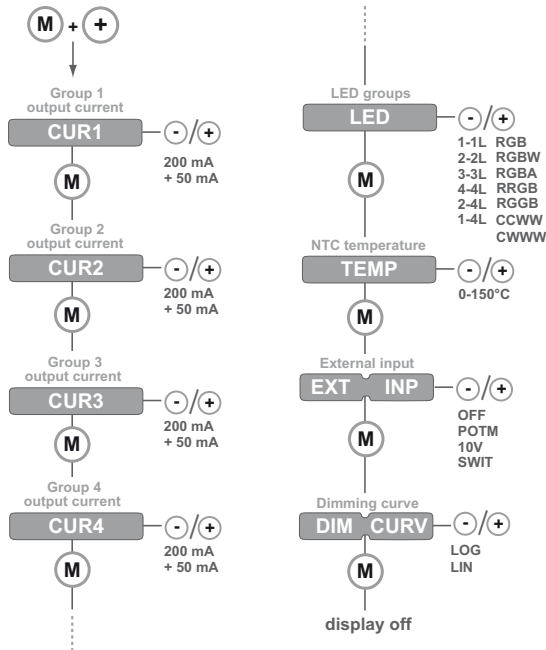
G Configuring the POWERdrive

Manual configuration

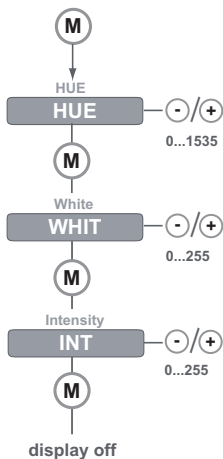
1. Select mode of operation:



2. Set LED current and LED groups:

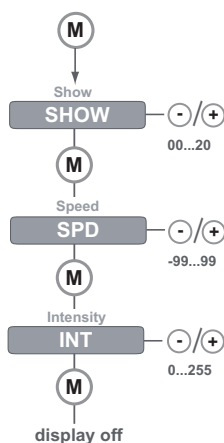


3. Standalone operation - Colour*



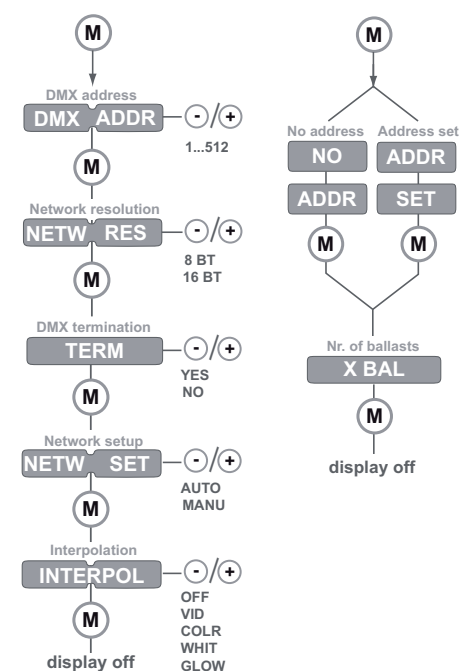
or

Standalone operation - Show -



or

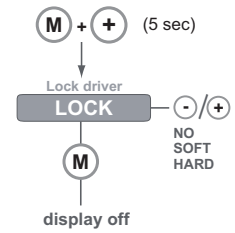
Networked operation - DMX or DALI -



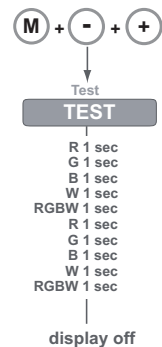
* The colour menu depends on the LED group settings you have selected in step 2.

Other features

Locking the configuration



Visual test run



Reset to factory defaults

