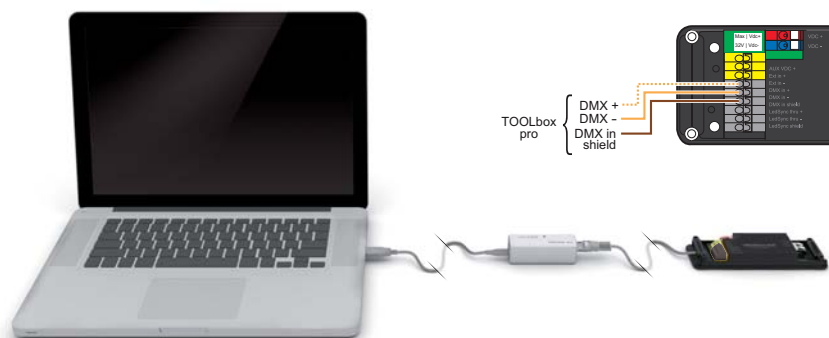


Light
is our passion

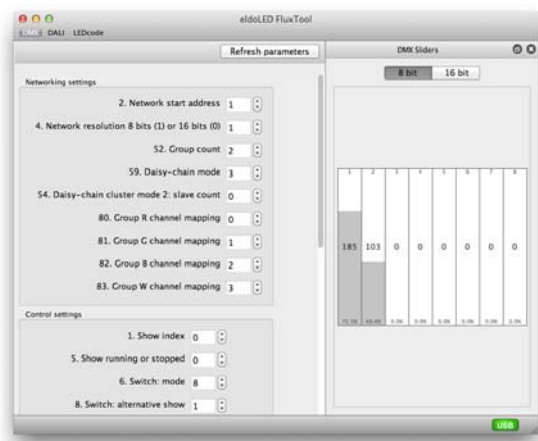
Connecting and installing DMX compatible LINEARdrive 212D/222D



A Removing the cover



B Connecting TOOLbox pro to LED driver



C Configuring the LED driver with FluxTool

Installing the FluxTool application

On Mac OS 10.6 or higher:

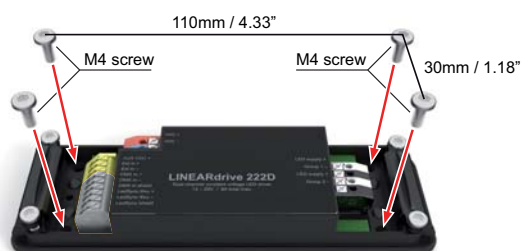
- Download the FluxTool application at www.eldoled.com/software
- Drag the FluxTool icon into your applications folder.

On Windows XP/Vista/7 (both 32 and 64 bit):

- Download the FluxTool application at www.eldoled.com/software
- Run the FluxTool setup.
- Manually install the FluxTool driver program located in the FluxTool folder (refer to addendum sheet Installation TOOLbox pro driver).

For more information, refer to www.eldoled.com/software.

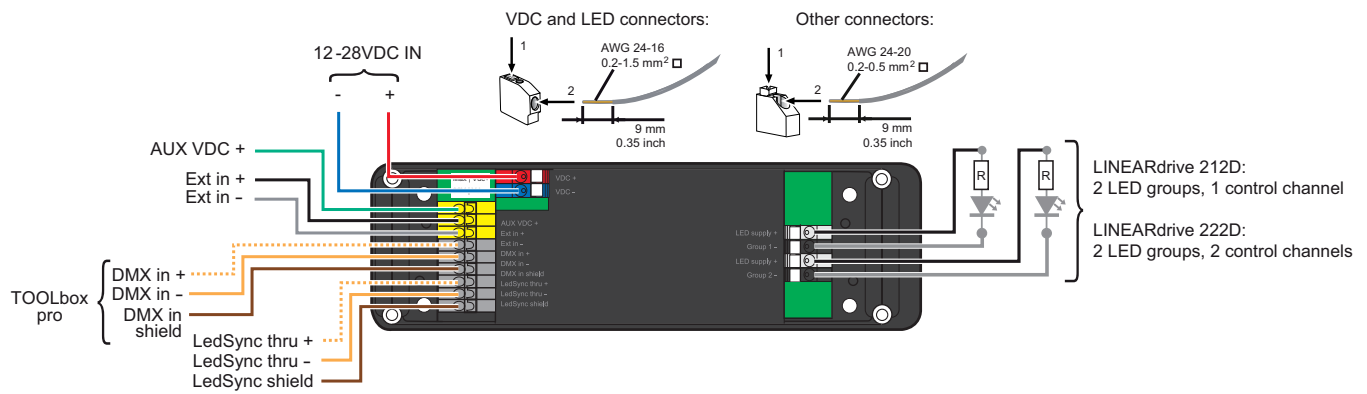
Note that with the TOOLbox pro and FluxTool software you can configure a LINEARdrive 222D as a single-channel driver, but you cannot configure a LINEARdrive 212D as a two-channel driver.



D Mounting the LED driver



E Removing the strain reliefs



F Making the wire connections



CAUTION: The device may only be connected and installed by a qualified electrician. All applicable regulations, legislation and building codes must be observed. Incorrect installation of the device can cause irreparable damage to the device and the connected LEDs.



Use an identical AWG value for the wires held in place by the same strain relief, so the strain relief is most effective.



G Fastening the strain reliefs



H Replacing the cover