

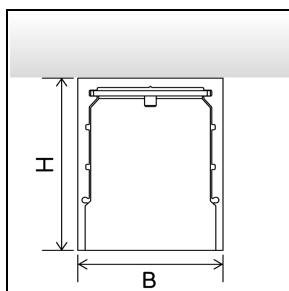
instalight NoLimit 4033 surface mount profile, small  
**surface mount profile**



**Main Features**

- > Offers two locking stages: flush, protruding
- > Tool-free mounting of light inserts and operating devices

## Product Variations



	Housing colour
il 4033_MK AB F BL	RAL 9011
il 4033 MK AB F WH	RAL 9016



# Specifications

Lifecycle Status	Active
Length	2300 mm

Width	50 mm
Height	70 mm
Weight	4.5 kg

## Accessories

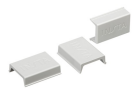


**Front cap set surface mount profile, small**



**Straight profile connector set**

*IL4033\_LPV*



**Cable bracket set (20 pieces)**

*IL4033\_ZM\_K\_001*



**90° corner connector surface mount profile, small**