



XICATO® GalaXi™



Professional Bluetooth® Mesh Lighting Control

Changing the Controls Equation

Xicato has built its reputation on solving the most difficult lighting challenges. First, it was color consistency, both initial and over lifetime. Then, it was color quality, with the Artist Series. Next, it was deep, smooth, flicker-free dimming, with the Xicato Intelligent Module (XIM).

Now, Xicato is reducing the cost and complexity of controls with our GalaXi™ portfolio of open standard Bluetooth wireless control products. GalaXi enables worry-free, hassle-free, and economical lighting control, with no compromise to power or performance.

Fast, Easy, and Affordable

Xicato GalaXi saves time and money, enabling simple, flexible system design. Installation and commissioning in hours or days, rather than weeks or months. No more expensive wires, hubs, or dedicated control gear. All without sacrificing fast, responsive performance or powerful features such as groups, scenes, schedules and sensor control.

Industry-leading Performance

Bluetooth architecture features direct, peer-to-peer communication between nodes, ensuring nearly instantaneous response to input from switches, sensors, or mobile devices. No need to “hop” to a hub or a central controller. Lights are intelligent; programmed to respond directly and individually to one or more inputs.

Unlimited Scalability for Large Installations

Xicato GalaXi is highly scalable to meet the needs of large commercial sites. There is no practical limit on the physical size or number of nodes in a network. Tens of thousands of nodes can share a single secure network, and there can be tens of thousands of secure networks. Define thousands of groups or scenes, if you like. Extend the network using the Xicato Intelligent Gateway, and eventually through Bluetooth Mesh.

Fully Automated Lighting

Lights can be individually programmed to respond to manual commands or time of day, but the power of the system is fully revealed when switches and schedules are combined with occupancy (motion) and ambient light (lux) sensors. Put the light you need, *where* you need it, and *when* you need it. Automation provides the ability to minimize energy consumption to meet government regulations (and operating budgets!), but also creates a comfortable, convenient environment for people.

Inherent Reliability

Don't worry – the lights know what to do! The elimination of wiring, connectors, hubs and central controllers eliminates the possibility that one of them will fail, taking down the entire system. Distributing intelligence to the lights means that there is no single point of failure – a failed node affects only that node.

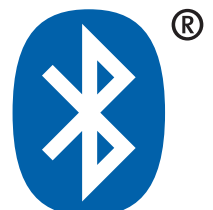
Beacons for Location-Based Services

GalaXi enables location based information and navigation services via integrated, programmable iBeacons, AltBeacons, and Eddystone beacons. Beacons act as indoor GPS satellites, periodically broadcasting tiny messages that can be read by mobile apps to determine the users' location and provide information, wayfinding, or asset tracking.

Operational Management

Xicato lighting nodes protect themselves by detecting thermal overload, and automatically reduce intensity or shut off to stay cool.

Xicato nodes also collect and report data – such as total operating hours, temperature, intensity, wattage and input voltage – that allow facility



The Xicato GalaXi Portfolio

XIM – Xicato Intelligent Modules

XIM is a compact lighting module that integrates (1) a Xicato light source, (2) an industry-leading dimming driver, and (3) wired and Bluetooth wireless control.

Xicato is the only LED vendor to guarantee initial color consistency of 1x2 SDCM, as well as a 7-year, B0 (no failures) warranty on L70 lumen maintenance, color maintenance (< 3 SDCM) and integrated electronics!

Xicato light sources are available in 9mm or 19mm LES, 2700K to 4000K CCT, multiple SPD/CRI options including the legendary Artist Series, and 700lm to 3000lm output. The integrated Xicato driver can be controlled by Bluetooth and/or DALI or 0-10V, and provides smooth, flicker-free dimming to 0.1%.

XIM provides extensive operating data over Bluetooth to enable proactive lighting maintenance. It can also transmit Eddystone, AltBeacon, and/or iBeacons to enable location based information and navigation services in mobile apps.



XIM comes in 19mm and 9mm Light Emitting Surfaces.

XID – Xicato Intelligent Drivers

XID are compact, programmable, deep dimming drivers that enable Bluetooth and/or wired control of most LED sources up to 56W. This includes the entire Xicato XTM portfolio, but also most 3rd party vendor indoor LEDs, CoBs, and LED arrays.

XID can fit different application requirements. A flat cylinder 12mm thick and 46mm in diameter, it is well suited to track and spot applications, and can be Bluetooth and/or 0-10V controlled. XID comes in two configurations: one with a programmable maximum current of 350mA to 700mA, and the other with a programmable maximum current of 700mA to 1400mA.

XID accepts either 24V or 48V DC input, provides smooth, IEEE 1789-compliant dimming performance to 0.1%, can be programmed with beacons, and provides detailed operating data over Bluetooth or DALI. Each driver can be manufacturer-programmed for maximum flux to fit specific light sources, luminaires and installations, and OEMs can even add their brand, model and serial number for digital tracking.



XIDs provide deep dimming with Bluetooth control for a wide variety of LED light sources.

XSW - Xswitch switch adapters

Xswitch modules convert standard 0-10V dimmers or low voltage contact switches into powerful programmable Bluetooth-enabled lighting controllers. Field installable and powered by 15-48V DC, different models are compatible with contact switches with up to 4 or 8 buttons, or standard rocker-plus slider 0-10V switches. Xswitch provides power to LEDs and to the 0-10V dimming circuit, so DC wires are all you need.

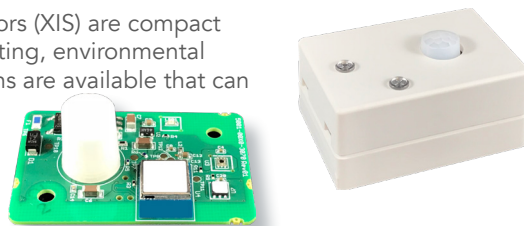


Xswitch (above and left) allows you to turn your favorite 0-10V dimmer or low voltage contact switch into a Bluetooth lighting controller

XIS – Xicato Intelligent Sensors

Available in PCBA or basic plastic housing in white or black, Xicato Intelligent Sensors (XIS) are compact wireless nodes that transmit sensor data over the Bluetooth network for use by lighting, environmental management, or other applications. Various wired or battery powered configurations are available that can sense passive infrared (PIR) motion, ambient light (lux), temperature, and relative humidity.

XIS can automate your environment with wireless motion and ambient light sensing.



XIG – Xicato Intelligent Gateway

The Xicato Intelligent Gateway (XIG) provides wired or wireless IP access to a Bluetooth network of LED modules, drivers, bridges, sensors, and other devices. XIG allows users to extend the Bluetooth network beyond the range of a Bluetooth radio to any distance or any number of sites, providing remote access for programming, monitoring and control of large buildings, campuses, or enterprises.

In addition to its own web-based user interface, compatible with any standard browser, XIG features an open, secure HTTP interface API that allows Xicato nodes to be monitored and controlled through the XIG by 3rd party lighting control and/or building management systems.

XIG provides range extension, remote monitoring, configuration and control, and protocol conversion between Bluetooth and IP based protocols.



Xtouch™ Programmable Touch Screen Control Software

Xicato Xtouch and Xtouch MG are Android apps available on the Google Play store and compatible with many Android tablets. They communicate through the XIG, using Xicato's open HTTP application programming interface (API), and provides a simple way to command intensity levels and up to 6 scenes for any group of lights. Users can program which lights or groups they want to control and how, with intensity levels, scenes, or sensor response states, and can even configure the colors of the background and buttons.

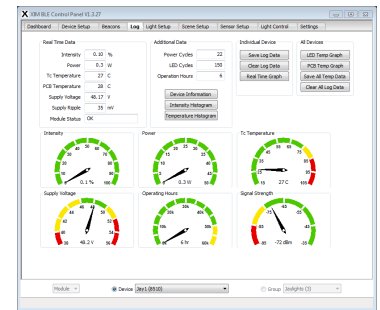
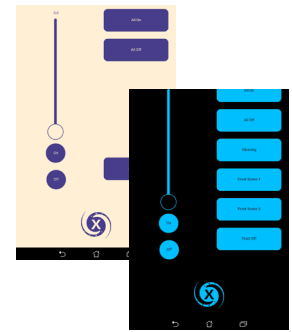
Xicato XIMtroller iOS Control Software

XIMtroller, available free from the Apple iTunes App Store, provides mobile lighting control and limited operational monitoring from iOS devices.

Xicato Control Panel

Xicato Control Panel provides access to all of the functionality of the Xicato GalaXi lighting control network. Available for Windows or MacOS, it supports provisioning, configuration, control and monitoring of XIM, XID, XIS, Xswitch and "Powered by Xicato GalaXi" nodes, including device numbering and naming, secure group names and passwords, group and scene creation and assignment, scheduling, and sensor responses. It allows users to add and manage beacons, and to monitor all of the operational data available from the various devices. And much more. Control Panel is an indispensable software tool that is available free of charge to Xicato customers.

Xtouch and Xtouch MG are Android apps that provide powerful touch-screen control through the XIG.



Xicato Control Panel provides full provisioning, configuration, control and monitoring capabilities

POWERED BY

XICATO®  **GalaXi™**



Above: Eulum TRAN-XIT translates Bluetooth to standard 1-10V signals.

Below: Entity EN1612



The "Powered by Xicato GalaXi" program is open to technology partners and luminaire manufacturers that incorporate Xicato GalaXi technology into their products.

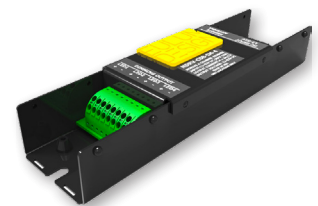
Companies such as Eulum and Entity integrate the Xicato GalaXi Card to allow their devices to participate in GalaXi networks. Xicato works with these companies to include their products in our Control Panel and other software interfaces.

Xicato also publishes APIs that enable "Works with Xicato GalaXi" interoperability with lighting control and building management systems, wall switches and touch panels.

Contact Xicato to find out how to become a "Powered by Xicato GalaXi" or "Works with Xicato GalaXi" partner.



Enocean 2- and 4-button switches can command on/off/dim, scenes, and/or control states.



Eulum NDRV enables 4-channel PWM dimming of constant voltage linear tape

Extron

pharos

MEDIALON

LumiFi

About Xicato

Xicato designs and develops light sources and electronics that enable architects, designers and building managers to create beautiful, smart spaces in which people love to live and work. With thousands of installations around the globe, Xicato is a leading supplier of high quality lighting solutions, and is defining the future of intelligent light sources by integrating electronics, software and connectivity. Founded in 2007 and headquartered in Silicon Valley, Xicato has offices in China, Europe and the US.

For More Information

info@xicato.com • www.xicato.com

XICATO®